

# Housing & School Enrollment

The data presented below includes statistics related to school enrollment and housing in the Region, including median home values, median rent, median monthly housing costs and vacancy rates for communities in the UMRVDC Region and the State of Minnesota.

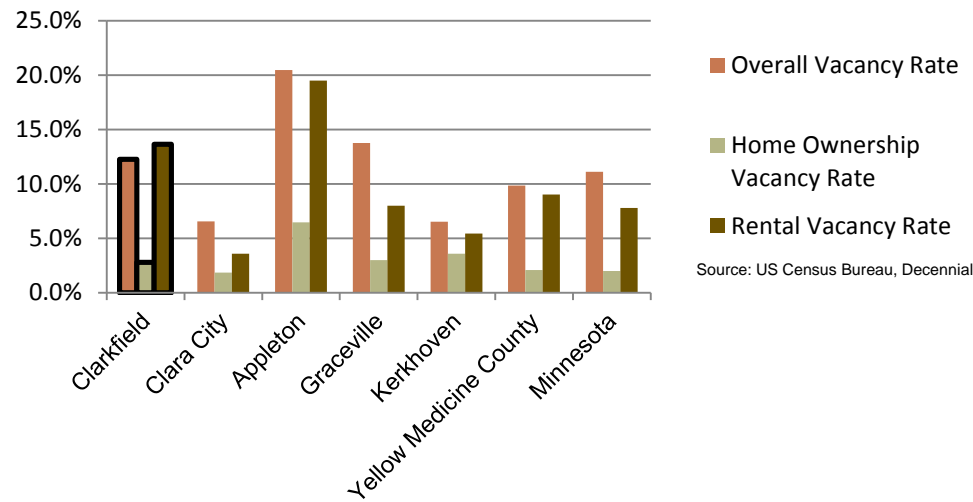
## 2010 Housing Statistics

City	Median Home Value	Median Rent	Median Monthly Housing Costs
<b>Clarkfield</b>	<b>\$50,400</b>	<b>\$469</b>	<b>\$828</b>
Canby	\$64,500	\$384	\$848
Graceville	\$62,400	\$534	\$993
Hanley Falls	\$63,800	\$246	\$892
Kerkhoven	\$86,900	\$325	\$850
Wood Lake	\$60,000	\$571	\$804
Yellow Medicine County	\$97,100	\$505	\$997
Minnesota	\$206,200	\$759	\$1,549

Source: US Census Bureau, ACS (2006-2010)

At \$50,400, the median home value in Clarkfield is the lowest among similar sized and nearby cities within the Region. It is also well below the median home value in Yellow Medicine County and the State of Minnesota. The median monthly rent and housing costs for homeowners however, fall in the middle when compared to other cities within the Region

## 2010 Vacancy Rates



Home ownership vacancy rate and rental vacancy rate are the proportion of the homeowner or rental inventory that is vacant "for sale" or vacant "for rent." The overall vacancy rate includes other vacancies such as vacant "sold - not occupied," seasonal housing and vacant "rented - not occupied." In 2010, the city of Clarkfield had the second highest rental vacancy rate among surrounding communities. The city had 15 census recognized rental units out of 105.

## School Enrollment Since 1999

School District	1999-2000	2005-2006	2010-2011	% Change
Benson School District	1,216	1,050	970	-20.23%
Canby School District	766	581	522	-31.85%
Clinton-Graceville-Beardsley School District	565	434	377	-33.27%
Dawson-Boyd School District	681	544	517	-24.08%
Kerkhoven-Murdock-Sunburg School District	664	585	557	-16.11%
Lac qui Parle Valley School District	1,245	1,007	820	-34.14%
Lakeview School District	589	609	595	1.02%
M.A.C.C.R.A.Y. School District	986	790	674	-31.64%
Montevideo School District	1,599	1,459	1,342	-16.07%
Ortonville School District	717	530	527	-26.50%
<b>Yellow Medicine East School District</b>	<b>1,299</b>	<b>1,081</b>	<b>862</b>	<b>-33.64%</b>

Source: Minnesota Department of Education

Clarkfield is part of the Yellow Medicine East School District and, like other school districts in the Region, has seen a steady decline in school enrollment over the last decade. Clarkfield is also home to the Clarkfield Charter School which, for the 2011 - 2012 school year reported an enrollment of 75 students in pre-kindergarten through sixth grade.

UMVRDC staff developed the concept and design for the Community Profile Brochures and data was collected by students and staff from the Center for Small Towns at the University of Minnesota, Morris. All information was collected from trusted sources such as the U.S. Census Bureau, the American Community Survey, Minnesota Department of Employment & Economic Development (DEED), and the Minnesota Department of Education and is presumed to be accurate.



Helping Communities Prosper

# 2010 Census Data for Clarkfield, Minnesota



This Community Profile Brochure is comprised of statistical information from a variety of sources and will provide a snapshot of historical and current demographic, economic and social trends in the Upper Minnesota Valley Region. The purpose is to provide a concise summary of key community statistics to aid decision making about community and economic development.

This statistical and informational profile was compiled by the UMRVDC in collaboration with The Center for Small Towns at the University of Minnesota, Morris for all five counties (Big Stone, Chippewa, Lac qui Parle, Swift and Yellow Medicine) and 37 cities in the Upper Minnesota Valley Region.



# Demographics

The demographic profile below provides a snapshot of Clarkfield and surrounding communities' historical, current and future population trends including population distribution and make up.

## Comparison Historical Population from 1960 to 2010

City	1960	1970	1980	1990	2000	2010	% Change
<b>Clarkfield</b>	<b>1,100</b>	<b>1,084</b>	<b>1,171</b>	<b>924</b>	<b>944</b>	<b>863</b>	<b>-21.55%</b>
Households	NA	385	NA	411	371	372	-3.38%
Average Household Size	NA	2.82	NA	2.25	2.54	2.32	-17.61%
Canby	2,146	2,147	2,143	1,826	1,903	1,795	-16.36%
Graceville	823	735	780	671	605	577	-29.89%
Hanley Falls	334	265	265	246	323	304	-8.98%
Kerkhoven	645	641	761	732	759	759	17.67%
Wood Lake	506	418	420	406	436	439	-13.24%
Yellow Medicine County	15,523	14,415	13,653	11,684	11,080	10,438	-32.76%

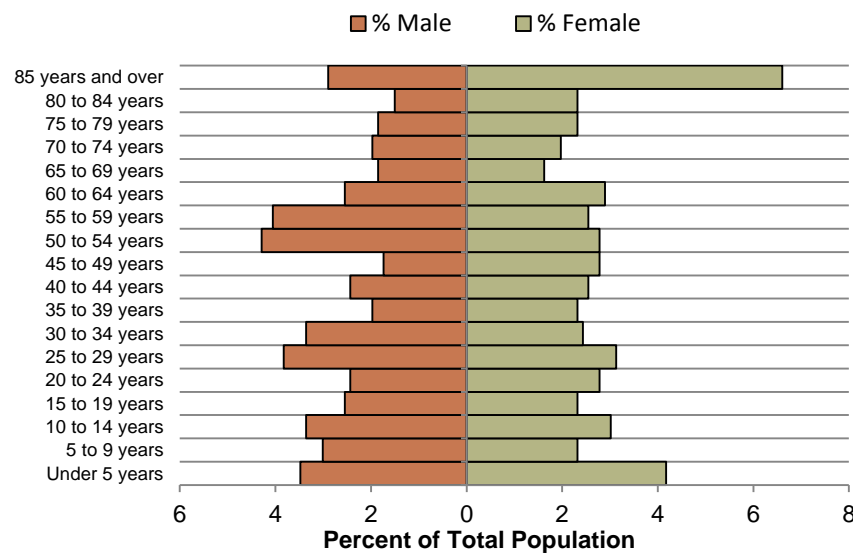
Source: US Census Bureau

## Clarkfield Population Projections

	2015	2020	2025	2030	2035	% Change
<b>Clarkfield</b>	<b>858</b>	<b>858</b>	<b>836</b>	<b>832</b>	<b>827</b>	<b>-3.61%</b>
Yellow Medicine County	9,980	9,970	9,720	9,660	9,600	-3.81%
UMVRDC Region	45,510	45,300	45,000	44,500	44,110	-3.08%

Source: Minnesota Demographic Center

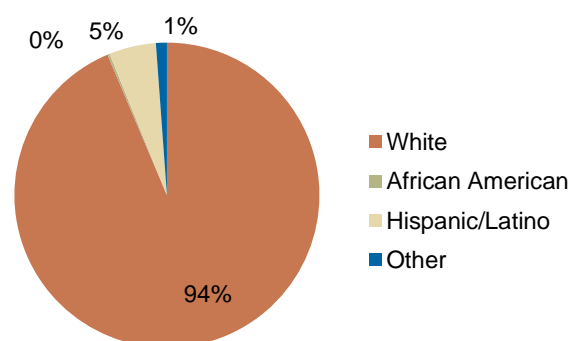
## Clarkfield Population Distribution, 2010



Source: U.S. Census Bureau, 2010 Decennial Census

The population distribution shows several population percentage spikes among 50 to 55 year old males and 25 to 34 year old males. The age cohort with the largest percentage of the population in Clarkfield is made up of females 85 years and older. Clarkfield also has a 94% white population, which is typical for a community of this size.

## Race, 2010



Source: US Census Bureau, Decennial

# Economic

The employment and industry data below represents a picture of the overall economic health of Clarkfield and Yellow Medicine County. This data shows the diversity of the Region's economy.

## Annual Median Household Income:

- City of Clarkfield - \$37,500
- Big Stone - \$44,438
- Chippewa - \$44,712
- Lac qui Parle - \$48,269
- Swift - \$43,846
- Yellow Medicine - \$50,740
- UMRDC Region - \$46,401
- Minnesota - \$57,243

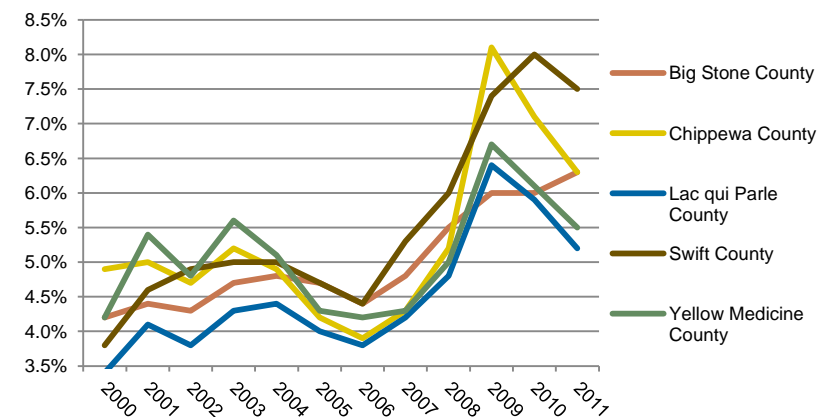
Source: 2007-2011 American Community Survey, U.S. Census Bureau

## Types of Employment in Clarkfield, 2011

Types of Industry	Number of Employees	Number of Firms	Total Wages	Average Weekly Wage
Education and Health Services	130	6	\$2,664,195	\$394
Trade, Transportation and Utilities	65	9	\$2,711,144	\$808
Financial Activities	34	4	\$1,426,809	\$796
Construction	9	5	\$296,218	\$618
Public Administration	5	2	\$133,276	\$519
<b>Total, All Industries</b>	<b>327</b>	<b>36</b>	<b>\$10,287,609</b>	<b>\$604</b>

Source: Minnesota Department of Employment and Economic Development, QCEW

## Unemployment Rates, 2000-2011

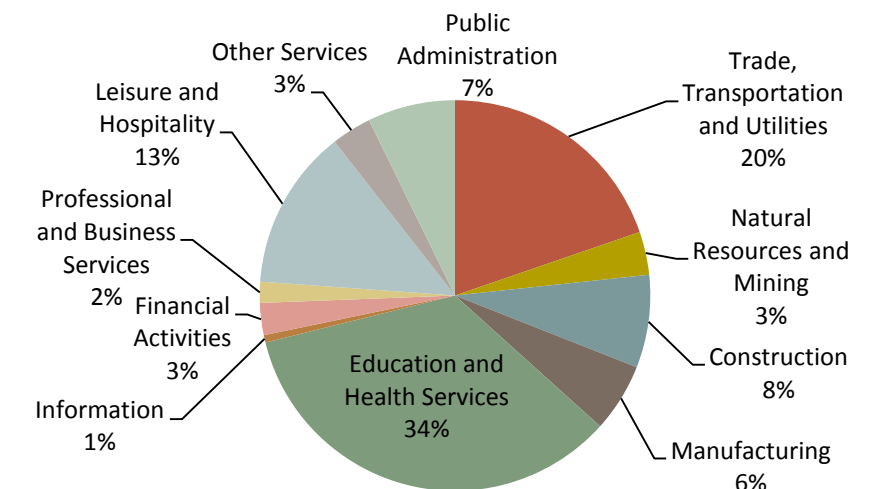


Source: Minnesota Department of Employment and Economic Development, LAUS

The employment categories shown in the table above and chart below show the 11 Super Sectors of Industry, which is the federal standard in data pertaining to business and industry. Much of the economic activity in Clarkfield is dispersed through three sectors; Education and Health Services, Trade, Transportation and Utilities, and Financial Activities. The pie chart below details that in Yellow Medicine County, just over one third of all employment comes from Education and Health Services. Yellow Medicine County had a slight increase in unemployment during the Recession of 2007 - 2009, but in 2011 had an unemployment rate under 5.5%.



## Employment by Industry in Yellow Medicine County



Source: Minnesota Department of Employment and Economic Development, QCEW