

# Housing & School Enrollment

The data presented below includes statistics related to school enrollment and housing in the Region, including median home values, median rent, median monthly housing costs and vacancy rates for communities in the UMRDC Region and the State of Minnesota.

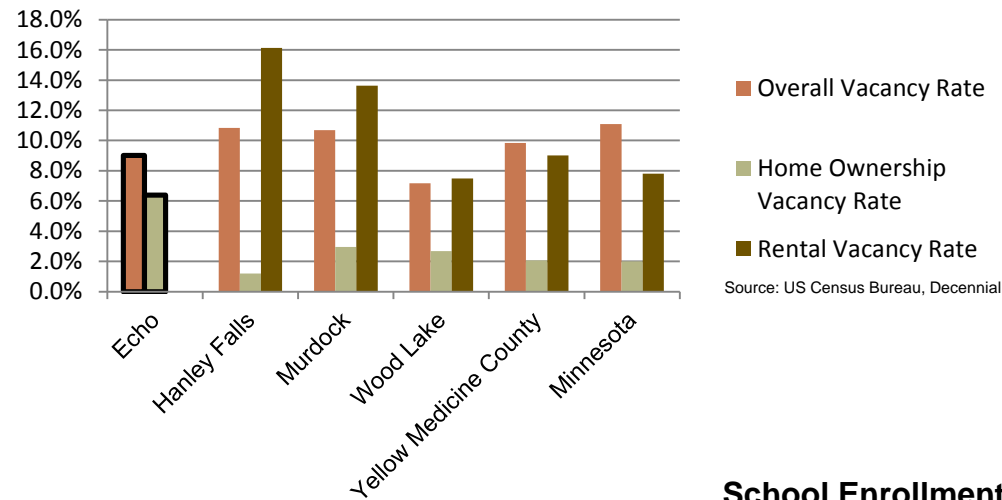
## 2010 Housing Statistics

City	Median Home Value	Median Rent	Median Monthly Housing Costs
<b>Echo</b>	<b>\$35,000</b>	<b>\$460</b>	<b>\$831</b>
Beardsley	\$47,700	\$283	\$914
Hanley Falls	\$63,800	\$246	\$892
Murdock	\$77,500	\$642	\$840
Porter	\$43,900	\$650	\$863
Watson	\$58,500	\$431	\$952
Yellow Medicine County	\$97,100	\$505	\$997
Minnesota	\$206,200	\$759	\$1,549

Source: US Census Bureau, ACS (2006-2010)

At \$35,000, the median home value in Echo is below that of Yellow Medicine County and the State of Minnesota, but it is also the lowest among similar sized communities in the Region. Median monthly housing costs for homeowners is also below both the county and the state, but is much more in line with similar sized communities in the Region. Median rent on the other hand, falls in the middle compared to other communities, nearly double that of some communities, but well under that of others.

## 2010 Vacancy Rates



Home ownership vacancy rate and rental vacancy rate are the proportion of the homeowner or rental inventory that is vacant "for sale" or vacant "for rent." The overall vacancy rate includes other vacancies such as vacant "sold - not occupied," seasonal housing and vacant "rented - not occupied." In 2010, the city of Echo had the highest home ownership vacancy rate among similar sized communities.

## School Enrollment Since 1999

School District	1999-2000	2005-2006	2010-2011	% Change
Benson School District	1,216	1,050	970	-20.23%
Canby School District	766	581	522	-31.85%
Clinton-Graceville-Beardsley School District	565	434	377	-33.27%
Dawson-Boyd School District	681	544	517	-24.08%
Kerkhoven-Murdock-Sunburg School District	664	585	557	-16.11%
Lac qui Parle Valley School District	1,245	1,007	820	-34.14%
Lakeview School District	589	609	595	1.02%
M.A.C.C.R.A.Y. School District	986	790	674	-31.64%
Montevideo School District	1,599	1,459	1,342	-16.07%
Ortonville School District	717	530	527	-26.50%
<b>Yellow Medicine East School District</b>	<b>1,299</b>	<b>1,081</b>	<b>862</b>	<b>-33.64%</b>

Source: Minnesota Department of Education

Echo is part of the Yellow Medicine East School District which, like other school districts in the Region, has seen a steady decline in school enrollment over the last decade. Additionally, Echo has a charter school that serves grades K-12. The enrollment at the beginning of the 2011-2012 school year was 182.



Upper Minnesota Valley  
REGIONAL DEVELOPMENT COMMISSION  
Helping Communities Prosper

323 W. Schlieman Ave. Appleton, MN 56208 320.289.1981 www.umvrdc.org

UMVRDC staff developed the concept and design for the Community Profile Brochures and data was collected by students and staff from the Center for Small Towns at the University of Minnesota, Morris. All information was collected from trusted sources such as the U.S. Census Bureau, the American Community Survey, Minnesota Department of Employment & Economic Development (DEED), and the Minnesota Department of Education and is presumed to be accurate.



Upper Minnesota Valley  
REGIONAL DEVELOPMENT COMMISSION



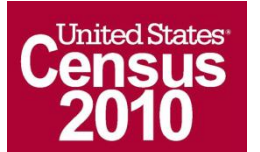
Helping Communities Prosper

# 2010 Census Data for Echo, Minnesota



This Community Profile Brochure is comprised of statistical information from a variety of sources and will provide a snapshot of historical and current demographic, economic and social trends in the Upper Minnesota Valley Region. The purpose is to provide a concise summary of key community statistics to aid decision making about community and economic development.

This statistical and informational profile was compiled by the UMRDC in collaboration with The Center for Small Towns at the University of Minnesota, Morris for all five counties (Big Stone, Chippewa, Lac qui Parle, Swift and Yellow Medicine) and 37 cities in the Upper Minnesota Valley Region.



For more information, or if you have questions, please visit our website: [www.umvrdc.org](http://www.umvrdc.org).

# Demographics

The demographic profile below provides a snapshot of Echo and surrounding communities' historical, current and future population trends including population distribution and make up.

## Comparison Historical Population from 1960 to 2010

City	1960	1970	1980	1990	2000	2010	% Change
<b>Echo</b>	<b>459</b>	<b>356</b>	<b>334</b>	<b>304</b>	<b>278</b>	<b>278</b>	<b>-39.43%</b>
Households	153	139	NA	135	119	111	-27.45%
Average Household Size	3.00	2.56	NA	2.25	2.34	2.50	-16.52%
Beardsley	410	366	344	297	262	233	-43.17%
Hanley Falls	334	265	265	246	323	304	-8.98%
Murdock	381	358	343	282	303	278	-27.03%
Porter	261	207	211	210	190	183	-29.89%
Watson	267	228	238	211	209	205	-23.22%
<b>Yellow Medicine County</b>	<b>15,523</b>	<b>14,415</b>	<b>13,653</b>	<b>11,684</b>	<b>11,080</b>	<b>10,438</b>	<b>-32.76%</b>

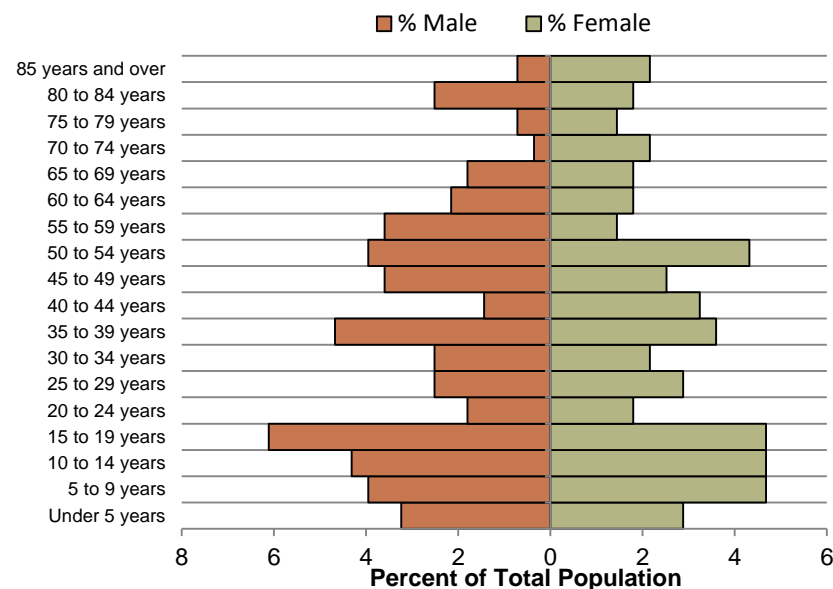
Source: US Census Bureau

## Echo Population Projections

	2015	2020	2025	2030	2035	% Change
<b>Echo</b>	<b>221</b>	<b>216</b>	<b>204</b>	<b>196</b>	<b>190</b>	<b>-14.03%</b>
Yellow Medicine County	9,980	9,970	9,720	9,660	9,600	-3.81%
UMVRDC Region	45,510	45,300	45,000	44,500	44,110	-3.08%

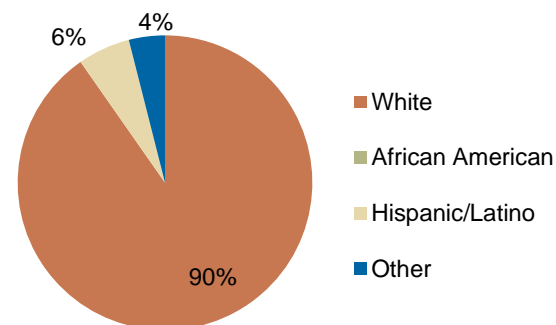
Source: Minnesota Demographic Center

## Echo Population Distribution, 2010



Echo has seen an overall decrease in population of nearly 40 percent from 1960-2010. The decrease has slowed since 1970, and held steady from 2000 to 2010. However, the population is projected to continue to decrease over the next few decades, but not as dramatically as it has in the past.

## Race, 2010



Source: US Census Bureau, Decennial Census

The population distribution above shows that there is a high percentage of the population in the younger aged cohorts. Echo has a slightly more diverse population than other similar sized communities with 10% of the population being non-white.

# Economic

The employment and industry data below represents a picture of the overall economic health of Echo and Yellow Medicine County. This data shows the diversity of the Region's economy.

## Annual Median Household Income:

- City of Echo - \$31,458
- Big Stone - \$44,438
- Chippewa - \$44,712
- Lac qui Parle - \$48,269
- Swift - \$43,846
- **Yellow Medicine - \$50,740**
- UMRDC Region - \$46,401
- Minnesota - \$57,243

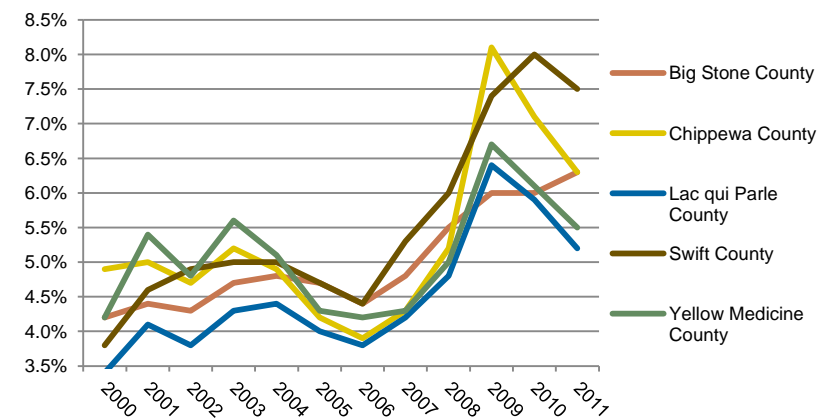
Source: 2007-2011 American Community Survey, U.S. Census Bureau

## Types of Employment in Echo, 2011

Types of Industry	Number of Employees	Number of Firms	Total Wages	Average Weekly Wage
Education and Health Services	91	2	\$3,162,826	\$677
Public Administration	5	1	\$94,046	\$424
<b>Total, All Industries</b>	<b>115</b>	<b>11</b>	<b>\$3,808,131</b>	<b>\$642</b>

Source: Minnesota Department of Employment and Economic Development, QCEW

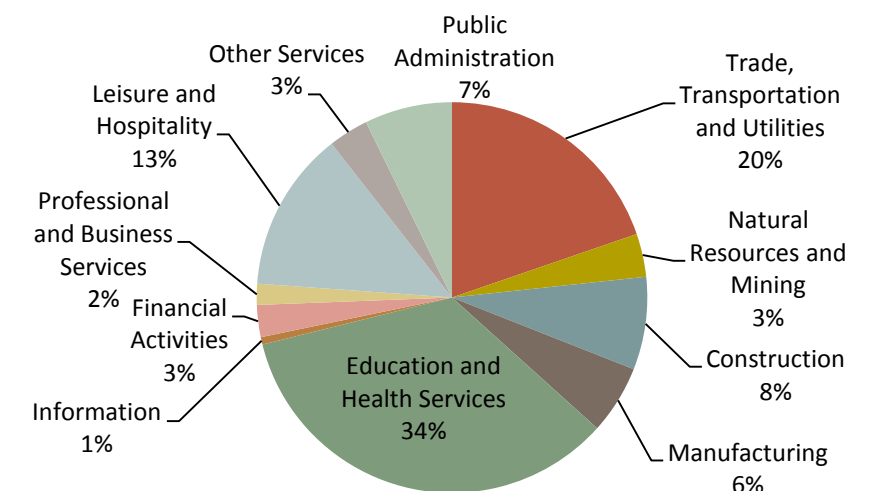
## Unemployment Rates, 2000-2011



Source: Minnesota Department of Employment and Economic Development, LAUS

The employment categories shown in the table above and chart below show the 11 Super Sectors of Industry, which is the federal standard in data pertaining to business and industry. Much of the employment and economic activity in Echo is in Education and Health Services. The pie chart below details that in Yellow Medicine County, just over one third of all employment comes from Education and Health Services, but another large employment sector is that of Trade, Transportation and Utilities. Yellow Medicine County had a slight increase in unemployment during the Recession of 2007-2009, but in 2011 had an unemployment rate under 5.5%.

## Employment by Industry in Yellow Medicine County



Source: Minnesota Department of Employment and Economic Development, QCEW

