

# Housing & School Enrollment

The data presented below includes statistics related to school enrollment and housing in the Region, including median home values, median rent, median monthly housing costs and vacancy rates for communities in the UMRVDC Region and the State of Minnesota.

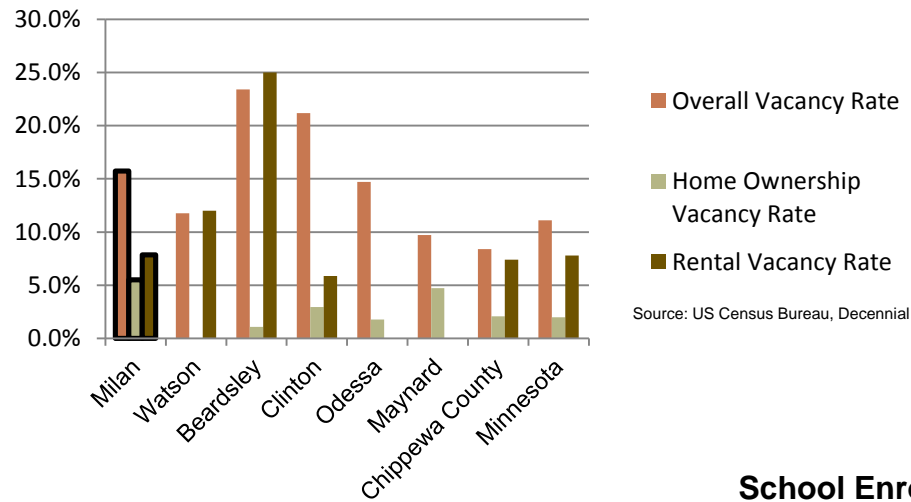
## 2010 Housing Statistics

City	Median Home Value	Median Rent	Median Monthly Housing Costs
<b>Milan</b>	<b>\$55,000</b>	<b>\$389</b>	<b>\$797</b>
Clinton	\$46,300	\$334	\$655
Hanley Falls	\$63,800	\$246	\$892
Maynard	\$56,500	\$625	\$1,100
Odessa	\$42,500	N/A	\$633
Watson	\$58,500	\$431	\$952
Chippewa County	\$94,400	\$542	\$1,026
Minnesota	\$206,200	\$759	\$1,549

Source: US Census Bureau, ACS (2006-2010)

At \$55,000, the median home value in Milan is well below the median home values for both Chippewa County and the state of Minnesota. However, compared to surrounding communities in the Region, Milan's median home value falls in the middle. This trend continues for Milan's median rent and median monthly housing costs for homeowners as they are less than Chippewa County and the State of Minnesota but similar to other same sized communities in the Region.

## 2010 Vacancy Rates



Source: US Census Bureau, Decennial

Home ownership vacancy rate and rental vacancy rate are the proportion of the homeowner or rental inventory that is vacant "for sale" or vacant "for rent." The overall vacancy rate includes other vacancies such as vacant "sold - not occupied," seasonal housing and vacant "rented - not occupied." In 2010, the city of Milan had similar vacancy rates compared to other like sized communities.

## School Enrollment Since 1999

School District	1999-2000	2005-2006	2010-2011	% Change
Benson School District	1,216	1,050	970	-20.23%
Canby School District	766	581	522	-31.85%
Clinton-Graceville-Beardsley School District	565	434	377	-33.27%
Dawson-Boyd School District	681	544	517	-24.08%
Kerkhoven-Murdock-Sunburg School District	664	585	557	-16.11%
<b>Lac qui Parle Valley School District</b>	<b>1,245</b>	<b>1,007</b>	<b>820</b>	<b>-34.14%</b>
Lakeview School District	589	609	595	1.02%
M.A.C.C.R.A.Y. School District	986	790	674	-31.64%
Montevideo School District	1,599	1,459	1,342	-16.07%
Ortonville School District	717	530	527	-26.50%
Yellow Medicine East School District	1,299	1,081	862	-33.64%

Source: Minnesota Department of Education

Milan is part of the Lac qui Parle Valley School District, which, like most school districts in the Region, has seen a steady decline in school enrollment over the last decade. The decline in enrollment is consistent with the declining and aging population in the Region. Note that data was only available for public school districts.



Upper Minnesota Valley  
REGIONAL DEVELOPMENT COMMISSION  
Helping Communities Prosper

323 W. Schlieman Ave. Appleton, MN 56208 320.289.1981 www.umvrdc.org

UMVRDC staff developed the concept and design for the Community Profile Brochures and data was collected by students and staff from the Center for Small Towns at the University of Minnesota, Morris. All information was collected from trusted sources such as the U.S. Census Bureau, the American Community Survey, Minnesota Department of Employment & Economic Development (DEED), and the Minnesota Department of Education and is presumed to be accurate.



# 2010 Census Data for Milan, Minnesota

Helping Communities Prosper



This Community Profile Brochure is comprised of statistical information from a variety of sources and will provide a snapshot of historical and current demographic, economic and social trends in the Upper Minnesota Valley Region. The purpose is to provide a concise summary of key community statistics to aid decision making about community and economic development.

This statistical and informational profile was compiled by the UMRVDC in collaboration with The Center for Small Towns at the University of Minnesota, Morris for all five counties (Big Stone, Chippewa, Lac qui Parle, Swift and Yellow Medicine) and 37 cities in the Upper Minnesota Valley Region.



For more information, or if you have questions, please visit our website: [www.umvrdc.org](http://www.umvrdc.org).

# Demographics

The demographic profile below provides a snapshot of Milan and surrounding communities' historical, current and future population trends including population distribution and make up.

## Comparison Historical Population from 1960 to 2010

City	1960	1970	1980	1990	2000	2010	% Change
<b>Milan</b>	<b>482</b>	<b>427</b>	<b>417</b>	<b>353</b>	<b>326</b>	<b>369</b>	<b>-23.44%</b>
Households	178	168	NA	170	150	150	-15.73%
Average Household Size	2.71	2.54	NA	2.08	2.17	2.46	-9.15%
Clinton	565	608	622	574	453	449	-20.53%
Hanley Falls	334	256	256	246	323	304	-8.98%
Maynard	429	455	428	419	308	366	-14.69%
Odessa	234	194	177	155	113	135	-42.31%
Watson	267	228	238	211	209	205	-23.22%
Chippewa County	16,320	15,109	14,941	13,228	13,088	12,441	-23.77%

Source: US Census Bureau

## Milan Population Projections

	2015	2020	2025	2030	2035	% Change
<b>Milan</b>	<b>294</b>	<b>290</b>	<b>285</b>	<b>275</b>	<b>269</b>	<b>-8.50%</b>
Chippewa County	12,890	13,040	13,200	13,130	13,130	1.86%
UMVRDC Region	45,510	45,300	45,000	44,500	44,110	-3.08%

Source: Minnesota Demographic Center

## Milan Population Distribution, 2010

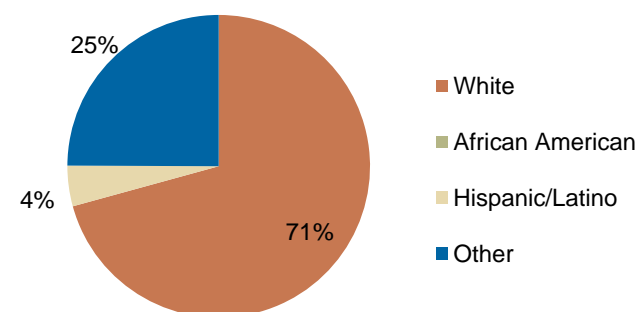


Source: U.S. Census Bureau, 2010 Decennial Census

The population distribution for Milan is different from many communities in the Region because a higher percentage of the population is in the younger age cohorts than the older age cohorts. Milan is the most diverse community in the region with almost 30 percent of the population being non-white.

Milan has seen an overall decrease in population from 1960 to 2010 of over 23 percent. This decline in population has been steady until this last decade where Milan experienced an increase in population of 43 people. This trend is noteworthy and is caused by an increase of non-whites to the community. The population projections show a decrease in the population, but the projection may not be accurately capturing the increase of the non-white community.

## Race, 2010



Source: US Census Bureau, Census

# Economic

The employment and industry data below represents a picture of the overall economic health of Milan and Chippewa County. This data shows the diversity of the Region's economy.

## Annual Median Household Income:

- City of Milan - \$40,417
- Big Stone - \$44,438
- Chippewa - \$44,712
- Lac qui Parle - \$48,269
- Swift - \$43,846
- Yellow Medicine - \$50,740
- UMRDC Region - \$46,401
- Minnesota - \$57,243

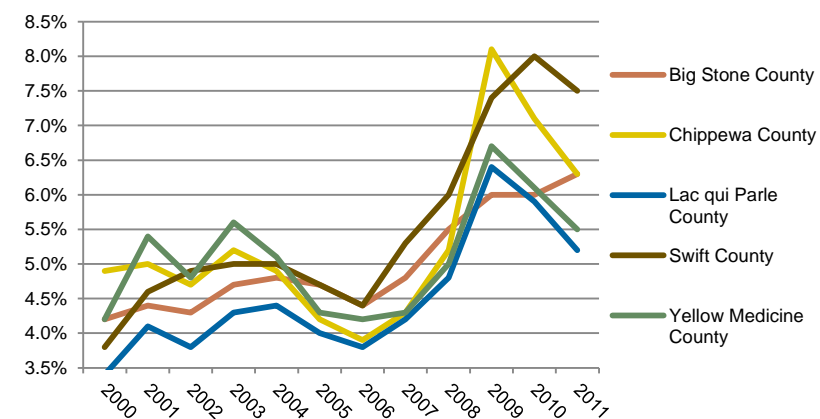
Source: 2007-2011 American Community Survey, U.S. Census Bureau

## Types of Employment in Milan, 2011

Types of Industry	Number of Employees	Number of Firms	Total Wages	Average Weekly Wage
Public Administration	8	1	\$71,364	\$171
<b>Total, All Industries</b>	<b>39</b>	<b>17</b>	<b>\$769,658</b>	<b>\$383</b>

Source: Minnesota Department of Employment and Economic Development, QCEW

## Unemployment Rates, 2000-2011

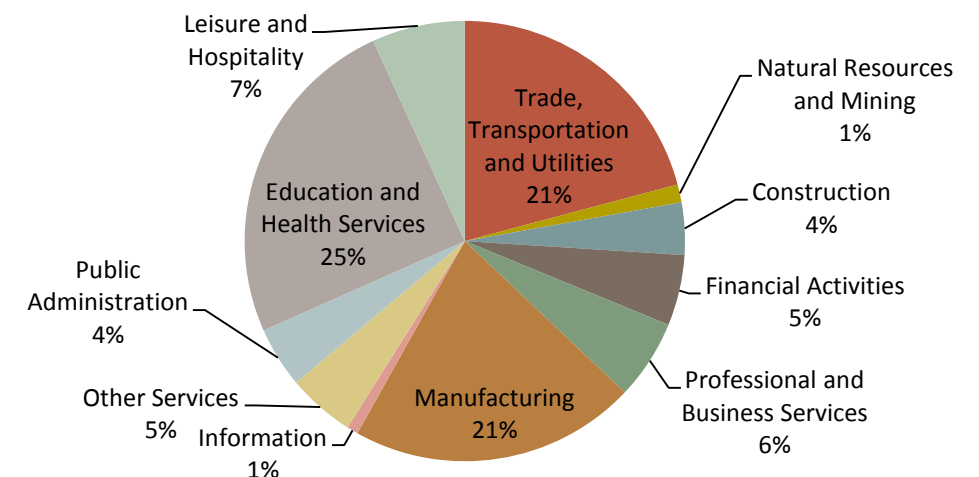


Source: Minnesota Department of Employment and Economic Development, LAUS

The employment categories shown in the table above and chart below show the 11 Super Sectors of Industry, which is the federal standard in data pertaining to business and industry. Much of the economic activity and employment in Milan is outside of these 11 Super Sectors. The pie chart below details that in a Chippewa County, nearly 3/4 of all employment in the county comes from three sectors—Education and Health Services, Manufacturing, and Trade, Transportation and Utilities. Chippewa County saw a spike in unemployment during the Recession of 2007-2009, but in 2011 had an unemployment rate under 6.5%.



## Employment by Industry in Chippewa County, 2011



Source: Minnesota Department of Employment and Economic Development, QCEW