

Housing & School Enrollment

The data presented below includes statistics related to school enrollment and housing in the Region, including median home values, median rent, median monthly housing costs and vacancy rates for counties in the UMRDC Region and the State of Minnesota.

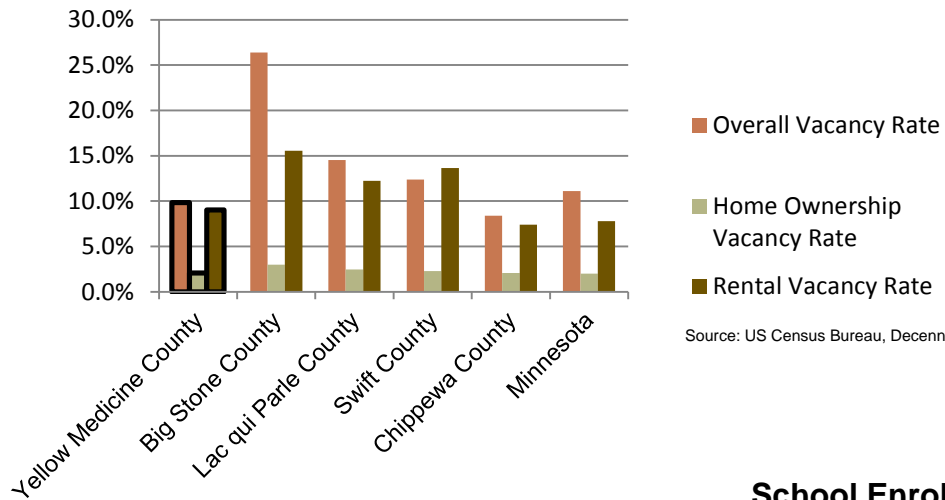
At \$97,100, the median home value in Yellow Medicine County is below that of the State of Minnesota, however it is one of the highest among surrounding counties. This trend continues for the median monthly housing costs for homeowners and renters, as housing costs in Yellow Medicine County are below the Minnesota average, but among the highest compared to surrounding counties in the Upper Minnesota Valley Region.

2010 Housing Statistics

County	Median Home Value	Median Rent	Median Monthly Housing Costs
Yellow Medicine County	\$97,100	\$505	\$997
Chippewa County	\$94,400	\$542	\$1,026
Lac qui Parle County	\$77,100	\$449	\$868
Swift County	\$97,600	\$453	\$1,024
Big Stone County	\$81,900	\$447	\$924
Minnesota	\$206,200	\$759	\$1,549

Source: US Census Bureau, ACS (2006-2010)

2010 Vacancy Rates



Source: US Census Bureau, Decennial

Home ownership vacancy rate and rental vacancy rate are the proportion of the homeowner or rental inventory that is vacant "for sale" or vacant "for rent." The overall vacancy rate includes other vacancies such as vacant "sold - not occupied," seasonal housing and vacant "rented - not occupied." In 2010, Yellow Medicine County had one of the lowest vacancy rates among surrounding counties.

School Enrollment Since 1999

School District	1999-2000	2005-2006	2010-2011	% Change
Benson School District	1,216	1,050	970	-20.23%
Canby School District	766	581	522	-31.85%
Clinton-Graceville-Beardsley School District	565	434	377	-33.27%
Dawson-Boyd School District	681	544	517	-24.08%
Kerkhoven-Murdock-Sunburg School District	664	585	557	-16.11%
Lac qui Parle Valley School District	1,245	1,007	820	-34.14%
Lakeview School District	589	609	595	1.02%
M.A.C.C.R.A.Y. School District	986	790	674	-31.64%
Montevideo School District	1,599	1,459	1,342	-16.07%
Ortonville School District	717	530	527	-26.50%
Yellow Medicine East School District	1,299	1,081	862	-33.64%

Source: Minnesota Department of Education

Most of the school districts in Yellow Medicine County have seen a steady decline in school enrollment over the last decade with the exception of Lakeview School District. The decline in school enrollment is consistent with the declining and aging population in the Region. In addition to the public school districts listed to the right, there are also two charter schools in Yellow Medicine County: Echo Charter School with a 2010-2011 enrollment of 193 and Clarkfield Charter school with 2011-2012 enrollment of 75.

UMVRDC staff developed the concept and design for the Community Profile Brochures and data was collected by students and staff from the Center for Small Towns at the University of Minnesota, Morris. All information was collected from trusted sources such as the U.S. Census Bureau, the American Community Survey, Minnesota Department of Employment & Economic Development (DEED), and the Minnesota Department of Education and is presumed to be accurate.



Helping Communities Prosper

2010 Census Data for Yellow Medicine County, Minnesota



This Community Profile Brochure is comprised of statistical information from a variety of sources and will provide a snapshot of historical and current demographic, economic and social trends in the Upper Minnesota Valley Region. The purpose is to provide a concise summary of key community statistics to aid decision making about community and economic development.

This statistical and informational profile was compiled by the UMRDC in collaboration with The Center for Small Towns at the University of Minnesota, Morris for all five counties (Big Stone, Chippewa, Lac qui Parle, Swift and Yellow Medicine) and 37 cities in the Upper Minnesota Valley Region.



Demographics

The demographic profile below is a snapshot of historical, current and future population trends including population distribution and make up.

Comparison Historical Population from 1960 to 2010

County	1960	1970	1980	1990	2000	2010	% Change
Yellow Medicine County	15,523	14,415	13,653	11,684	11,080	10,438	-32.76%
Households	4,647	4,565	4,991	4,607	4,439	4,292	-7.64%
Average Household Size	3.34	3.16	2.65	2.54	2.50	2.43	-27.20%
Chippewa County	16,320	15,109	14,941	13,228	13,088	12,441	-23.77%
Lac qui Parle County	13,330	11,164	10,592	8,924	8,067	7,259	-45.54%
Swift County	14,936	13,177	12,920	10,724	11,956	9,783	-34.50%
Big Stone County	8,954	7,941	7,716	6,285	5,820	5,269	-41.15%

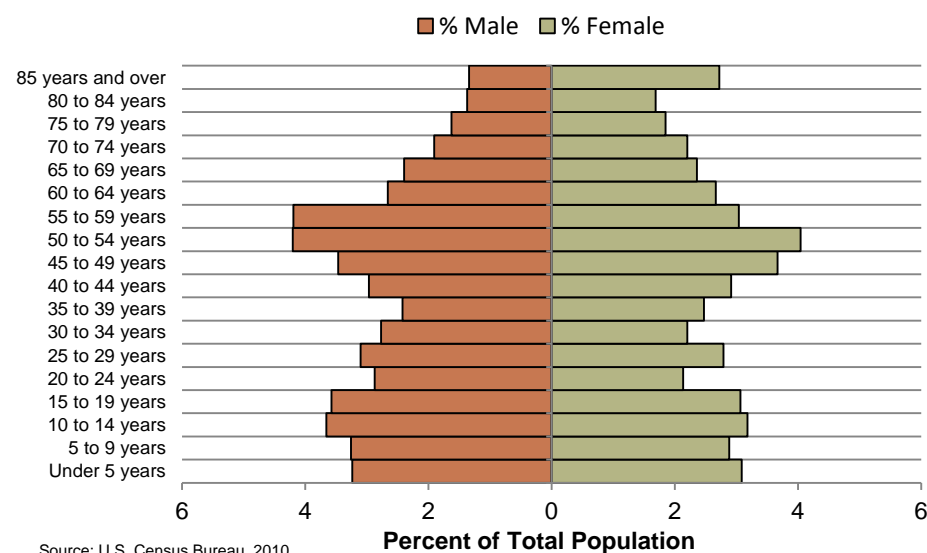
Source: US Census Bureau

UMVRDC Regional Population Projections

	2015	2020	2025	2030	2035	% Change
Yellow Medicine County	9,980	9,970	9,720	9,660	9,600	-3.81%
Big Stone County	5,190	5,160	5,160	5,110	5,060	-2.50%
Chippewa County	12,890	13,040	13,200	13,130	13,130	1.86%
Lac qui Parle County	6,940	6,830	6,770	6,640	6,520	-6.05%
Swift County	10,510	10,300	10,150	9,960	9,800	-6.76%
UMVRDC Region	45,510	45,300	45,000	44,500	44,110	-3.08%

Source: US Census Bureau

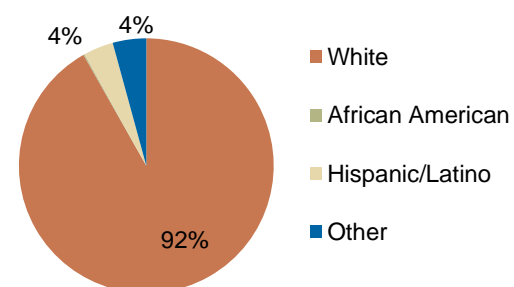
Yellow Medicine County Population Distribution, 2010



Source: U.S. Census Bureau, 2010 Decennial Census

Yellow Medicine County has nearly an entirely white population, which is typical for counties made up of small rural communities. However, the Upper Sioux Community is located in Yellow Medicine County and about 3% of all residents in the county identify as American Indian or Alaska Native. This population is included in the "other" category in the chart to the right.

Race, 2010



Source: US Census Bureau, Decennial Census

Economic

The employment and industry data below represents a picture of the overall economic health of the Region and Yellow Medicine County. This data shows the diversity of Yellow Medicine County's economy.

Types of Employment in Yellow Medicine County, 2011

Types of Industry	Number of Employees	Number of Firms	Total Wages	Average Weekly Wage
Education and Health Services	1,467	39	\$45,858,627	\$601
Trade, Transportation and Utilities	840	100	\$27,213,916	\$622
Leisure and Hospitality	566	28	\$10,872,209	\$368
Construction	327	47	\$18,656,226	\$1,088
Public Administration	309	23	\$9,748,975	\$606
Manufacturing	242	19	\$7,633,179	\$605
Natural Resources and Mining	152	16	\$6,203,172	\$785
Other Services	141	30	\$4,994,984	\$682
Financial Activities	113	23	\$4,519,920	\$767
Professional and Business Services	74	26	\$2,523,948	\$654
Information	26	6	\$1,076,548	\$794
Total, All Industries	4,259	356	\$139,301,704	\$628

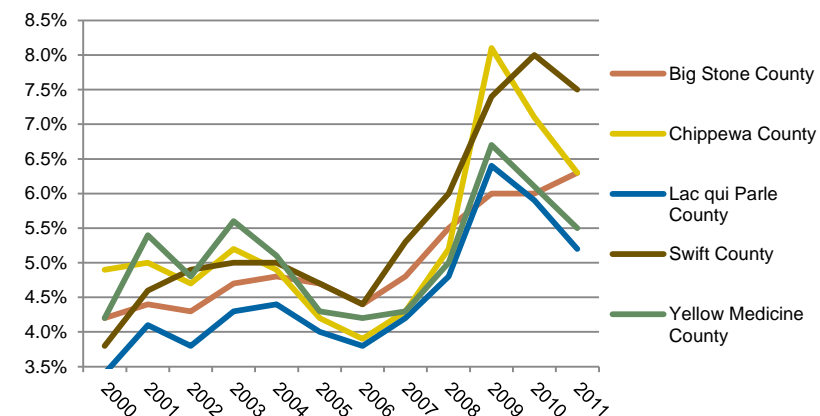
Source: Minnesota Department of Employment and Economic Development, QCEW

Annual Median Household Income:

- Big Stone - \$44,438
- Chippewa - \$44,712
- Lac qui Parle - \$48,269
- Swift - \$43,846
- **Yellow Medicine - \$50,740**
- UMRDC Region - \$46,401
- Minnesota - \$57,243

Source: 2007-2011 American Community Survey, U.S. Census Bureau

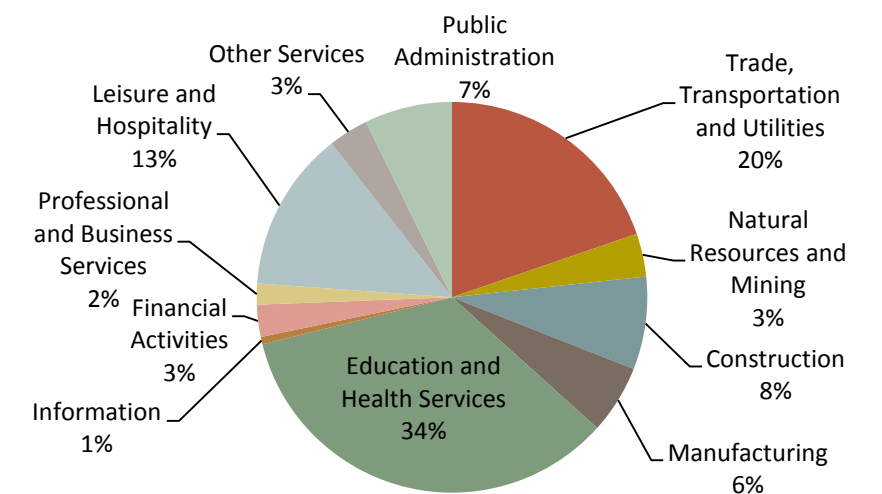
Unemployment Rates, 2000-2011



Source: Minnesota Department of Employment and Economic Development, LAUS

The employment categories shown in the table above and the chart below show the 11 Super Sectors of Industry, which is the federal standard in data pertaining to business and industry. Education and Health Services is the largest employment sector and also makes up a large portion of the economic activity in the county. The pie chart below shows that Trade, Transportation and Utilities as well as the category of Leisure and Hospitality are the other two large industry employers in Yellow Medicine County. Yellow Medicine County had a slight increase in unemployment during the Recession of 2007 to 2009, but in 2011 had an unemployment rate under 5.5%. Which is lower than the 2011 annual average unemployment rates of the State of Minnesota and the nation at 6.4% and 8.9% respectively.

Employment by Industry in Yellow Medicine County



Source: Minnesota Department of Employment and Economic Development, QCEW

