



Community House Dawson, Minnesota

A place to rest, hang out and build
community.



Main Street

Main Street

Main Street

Main Street

Main Street

Main Street

Main Street

Main Street

Design Principles

1

Community Focus

The aim of the new building is to provide a place to charge electric vehicles, do your laundry, wash your dog, go to the bathroom.

Beyond the basic task, the place should be a nice place to rest and refresh.

A place to recharge...



Washing



Re-charging



Washing



Refreshing



Educating

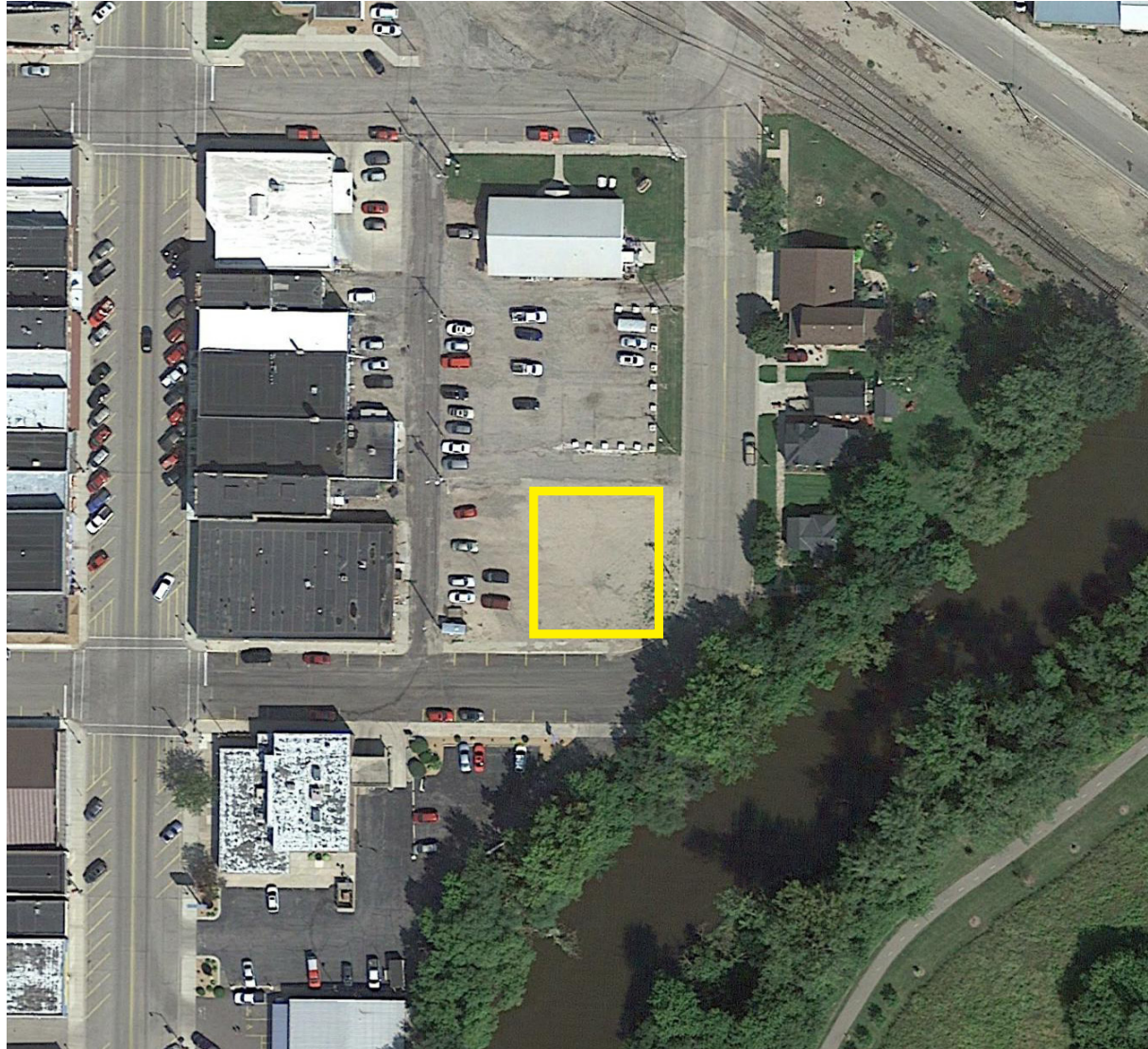


The site is centrally located between two regional campgrounds in Dawson.

- 1 Gnome Park Campground
- 2 New Veterans' Park Campground
- 3 Site



Site Evaluation



Constraints

Vehicular Access Currently, off-street parking exists

Accessibility How will people arrive here?

Openess Must create an urban presence

Opportunities

Location Visible, corner site just off of main street

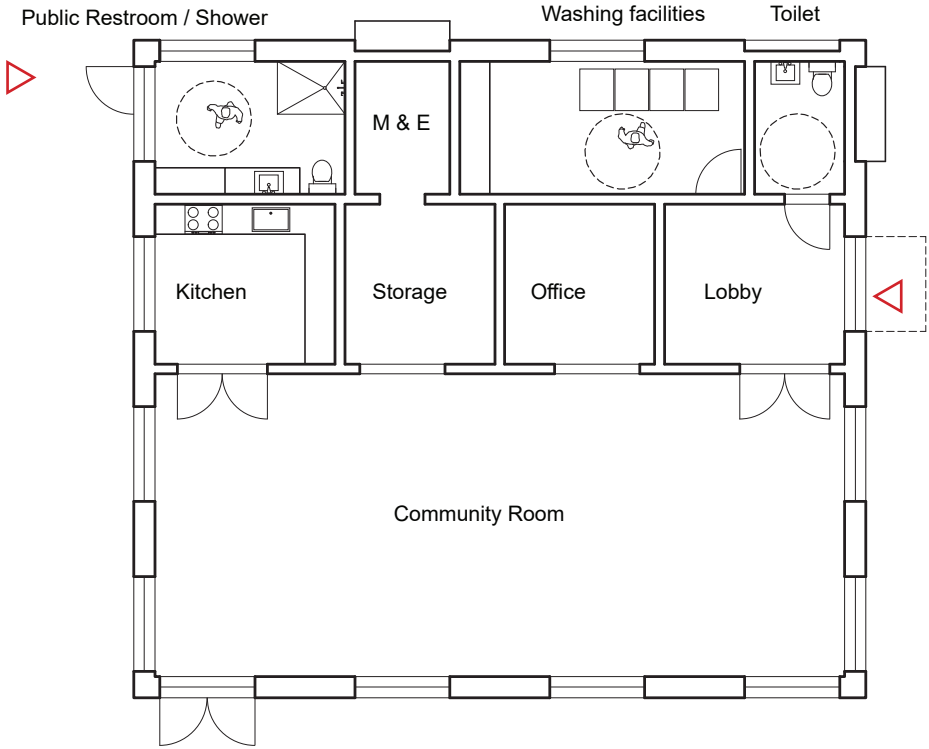
Accessability Ample area for adding parking on-site.

Presence The buidling is exposed on a corner site and conceived as having four equal facades

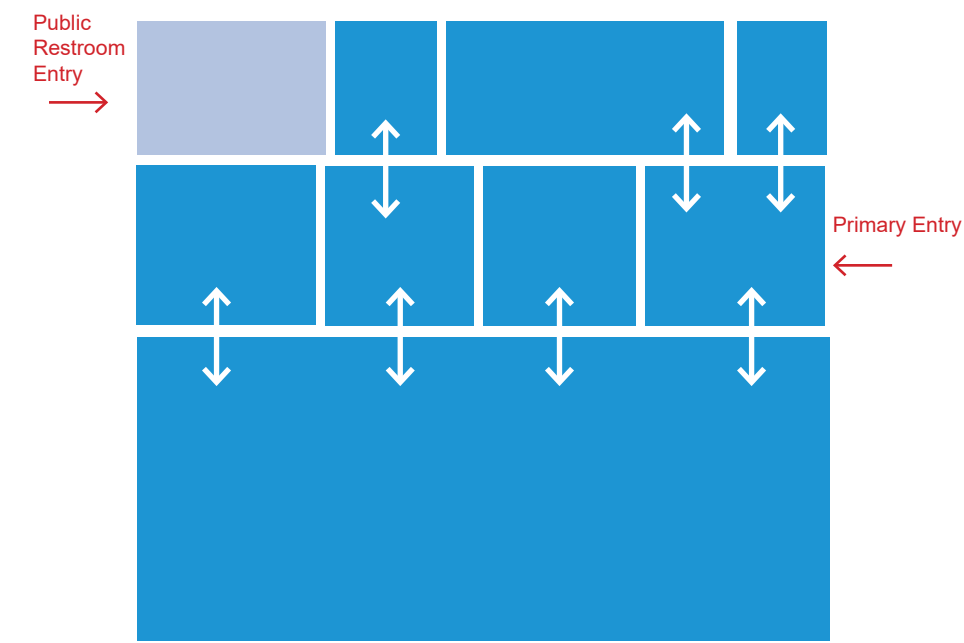


Site Context

The building pragmatically combines many of the features associated with rest stops. Refueling is combined with a wifi hotspot, laundromat and restroom facility to create a community-serving rest stop.



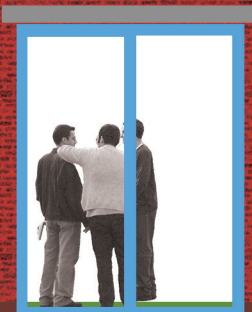
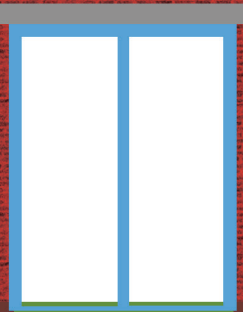
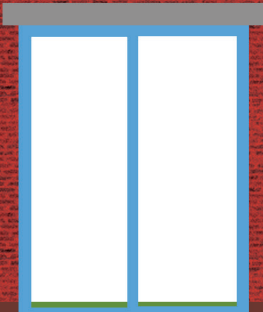
Site Plan (2,150 ft2)



Access Diagram

COMMUNITY HOUSE

Community House
Community House





Wood clad interior