

Housing Condition Assessments

Case Study: City of Appleton

Goals of Assessment

- Establish a baseline of housing conditions
- Identify areas of clustered blight

Remember!

- Snapshot in time
- Baseline data to inform future decisions

Appleton Housing Survey Codes

- Type

- S – Single Family**

- dg – detached garage
 - ag – attached garage
 - r – ranch
 - m - mobile

- D – Duplex**

- A – Apartment** → approx. # of units: _____

- M – Mobile**

- C – Commercial/retail/housing mixed**

Appleton Housing Survey Codes

- Condition
 - 1** – Well maintained
 - 2** – Substandard-minor
 - 3** – Substandard-major
 - 4** – Dilapidated

Appleton Housing Survey Codes

- Occupancy

- O** – Occupied

- U** – Unoccupied

- V** – Vacant lot

- Status

- R** – Rental

- F** – For Sale

- Others?



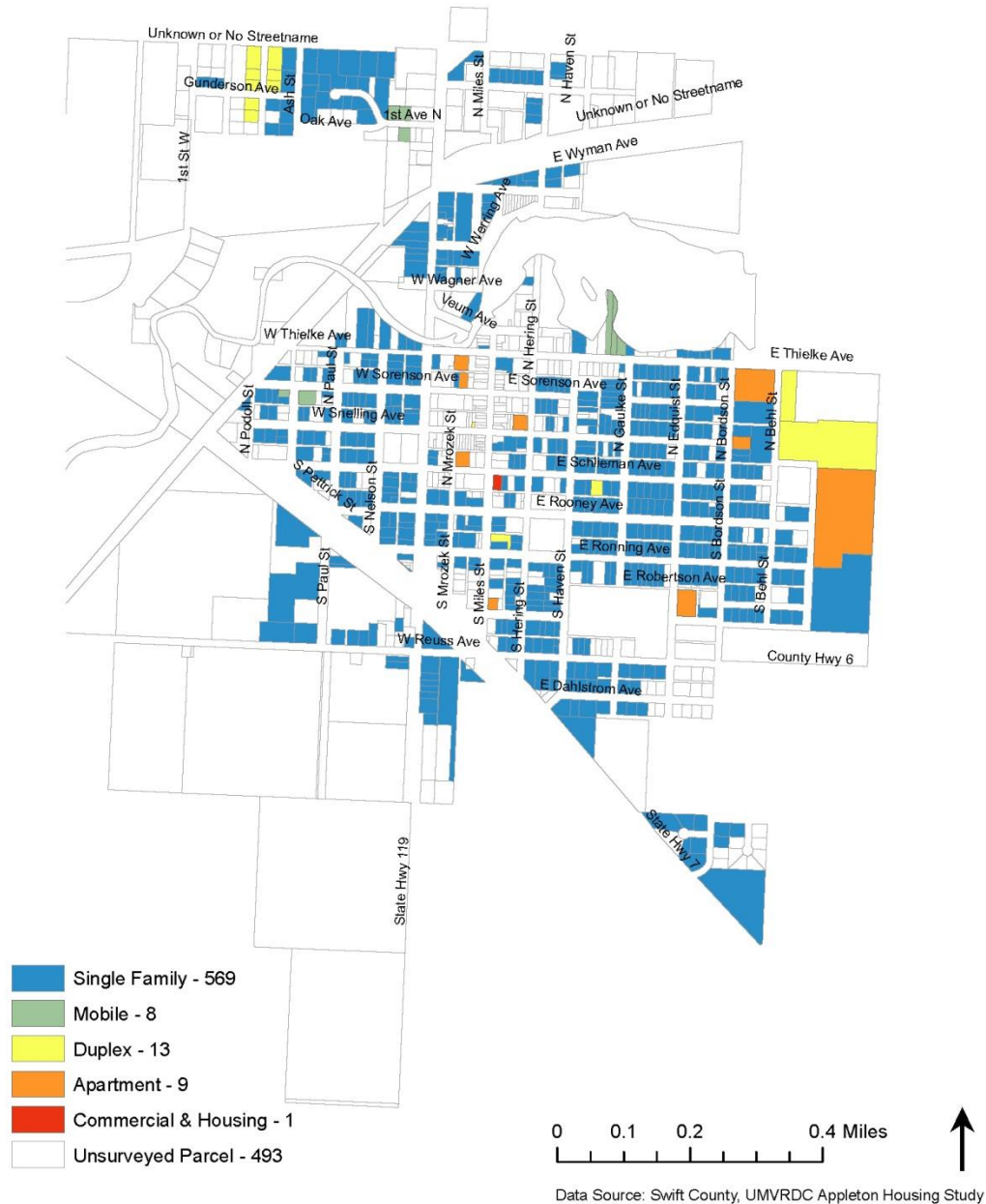


Southern East, Ireland, US&A, US&S, A&S, Geospatial, Seismicity, Hierarchy, IGN, JSP and the GIS User Community Copyright © 2016 Esri, All Rights Reserved.

Results coded by Parcel Number

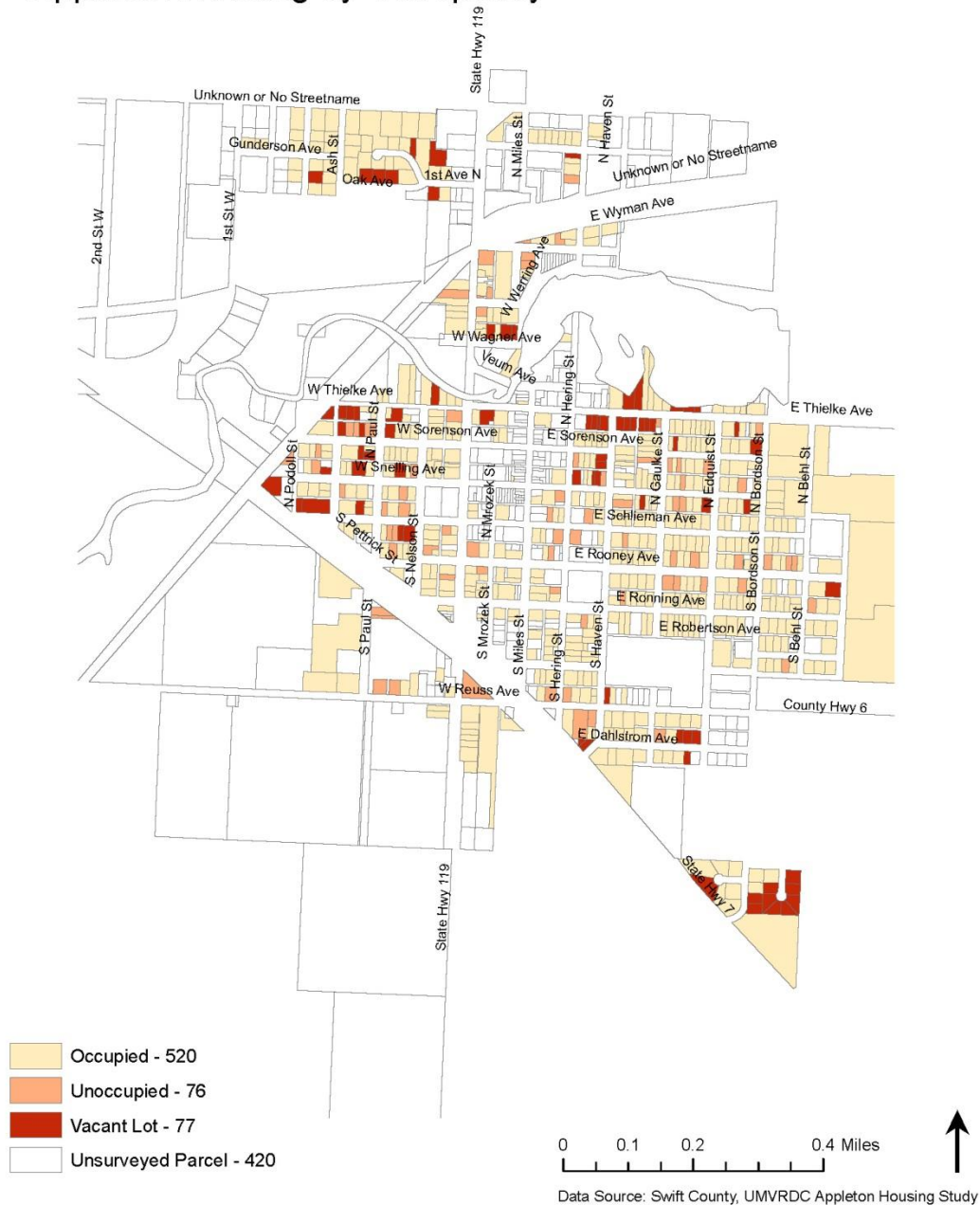
R20		fx														
A	B	C	D	E	F	G	H	I	J	K	L	M	N	O	P	Q
FID	PIN	RES_TYPE	RES_CLASS1	RES_CLASS2	RES_COND	RES_OCC	RES_STATUS	AREA	PERIMETE	NAME	ADDR_2	ADDR_3	ZIP	PLAT	WINDSHIELD	
220	218	22-0014-000						6732	366	"APPLETO "39 WEST	"APPLETO "56208000	"CITY OF APPLETON				
221	219	22-0014-200						13028.88	461.006	"ECONAR "33 WEST	"APPLETO "56208000	"CITY OF APPLETON				
222	220	22-0779-000						30942.21	803.6017	"DEL DEE F "733 NOR	"APPLETO "56208000	"RIVERINE HEIGHTS ADDITION				
223	221	22-0866-000			9 V			17268.8	728.5695	"LOHER/JJ "135 E THI	"APPLETO "56208000	"APPLETON-ACRE LOTS 40%				
224	222	22-0910-000	S		2 O			34972.36	899.4473	"BEHRENS "206 SO 61	"MILBANK "57252000	"APPLETO Substandard				
225	223	22-0911-000	S	DG	1 O			19147.8	801.9323	"BEHRENS "206 SO 61	"MILBANK "57252000	"APPLETON-ACRE LOTS 40%				
226	224	22-0913-000						9053.632	497.4722	"OLLANKE "306 HOLL	"HANCOC "49930181	"APPLETON-ACRE LOTS 40%				
227	225	22-0780-000						36703.82	1008.093	"DEL DEE F "733 NOR	"APPLETO "56208000	"RIVERINE HEIGHTS ADDITION				
228	226	22-0396-000						1576.75	165.5024	"APPLETO "39 WEST	"APPLETO "56208000	"MILL RESERVE				
229	227							38874.15	1010.68							
230	228	22-0853-000						11591.95	592.1882	"OYEN/AL "345 E THI	"APPLETO "56208000	"APPLETON-ACRE LOTS 40%				
231	229	22-0914-000	S	DG	M	3 O		22530.14	693.378	"OLLANKE "306 HOLL	"HANCOC "49930181	"APPLETO Substandard				
232	230	22-0015-000						2407.5	220.5042	"APPLETO "	"APPLETO "56208000	"CITY OF APPLETON				
233	231							22302.55	1030.459							
234	232	22-9999-000	S		1 O			22358.51	625.3623							
235	233	22-0854-000						2655.16	251.573	"WILKENII "351 EAST	"APPLETO "56208000	"APPLETON-ACRE LOTS 40%				
236	234	22-0867-000			9 V			13655.51	573.4925	"APPLETO "	"APPLETO "56208000	"APPLETON-ACRE LOTS 40%				
237	235	22-0016-000						9450	453.5031	"APPLETO "	"APPLETO "56208000	"CITY OF APPLETON				
238	236	22-0863-000	M		1 O			10678.27	457.5316	"BRUSTUE "145 E THI	"APPLETO "56208000	"APPLETON-ACRE LOTS 40%				
239	237	22-0915-000			9 V			12627.95	515.8471	"MORENC "245 WEST	"APPLETO "56208000	"APPLETON-ACRE LOTS 40%				
240	238	22-0895-100						31295.64	808.7812	"APPLETO "	"APPLETO "56208000	"APPLETON-ACRE LOTS 40%				
241	239	22-0021-000						5318	300.5016	"APPLETO "39 WEST	"APPLETO "56208000	"CITY OF APPLETON				
242	240	22-0020-000						5943.528	377.8068	"TOSEL/DI "244 2ND	"APPLETO "56208000	"CITY OF APPLETON				
243	241	22-0019-000						12254.3	449.5335	"APPLETO "39 WEST	"APPLETO "56208000	"CITY OF APPLETON				
244	242	22-0018-000						13126.21	462.6829	"ECONAR "33 WEST	"APPLETO "56208000	"CITY OF APPLETON				
245	243	22-0015-100						18038.5	536.5209	"TRINITY L "27 E THIE	"APPLETO "56208000	"CITY OF APPLETON				
246	244	22-0017-000						8217	388.501	"APPLETO "	"APPLETO "56208000	"CITY OF APPLETON				
247	245	22-0015-000						2606.977	303.4984	"APPLETO "	"APPLETO "56208000	"CITY OF APPLETON				
248	246							27.6865	29.66503							
249	247	22-0916-000	S	DG	3 O			9579.455	425.8988	"LUND/TH "241 W TH	"APPLETO "56208000	"APPLETO Substandard				
250	248	22-0395-000						3911.102	323.3781	"SCHUERN "349 NOR	"APPLETO "56208000	"MILL RESERVE				
251	249							241.7609	76.09966							
252	250							425.729	96.5639							
253	251	22-0855-000	S		1 O			15820.53	508.7063	"RONNIN "341 EAST	"APPLETO "56208000	"APPLETON-ACRE LOTS 40%				
254	252	22-0862-000	S		3 O			5781.583	318.7204	"NEWMAR "223 EAST	"APPLETO "56208000	"APPLETON-ACRE LOTS 40%				

Appleton Housing by Type



Data Source: Swift County, UMVRDC Appleton Housing Study

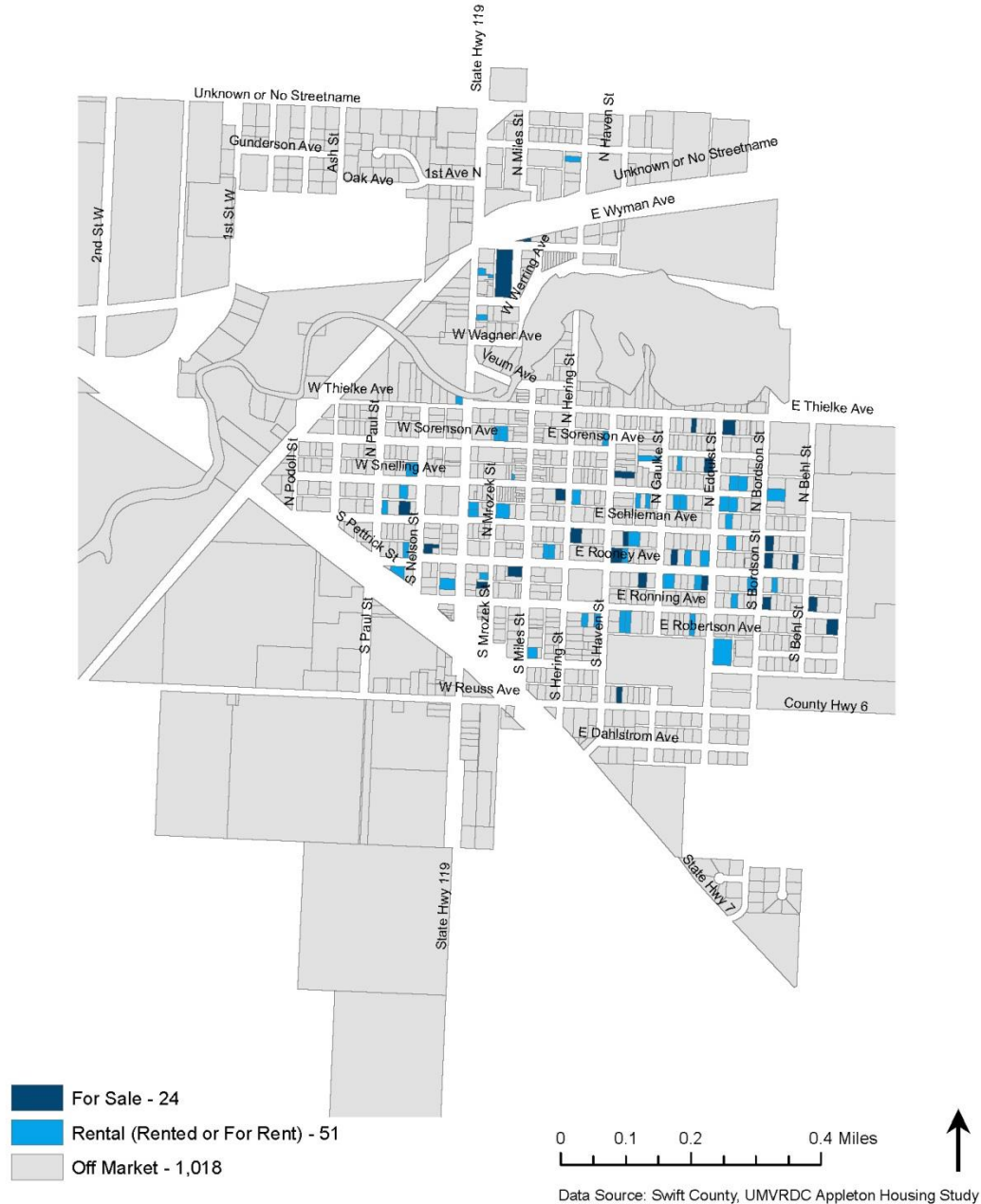
Appleton Housing by Occupancy



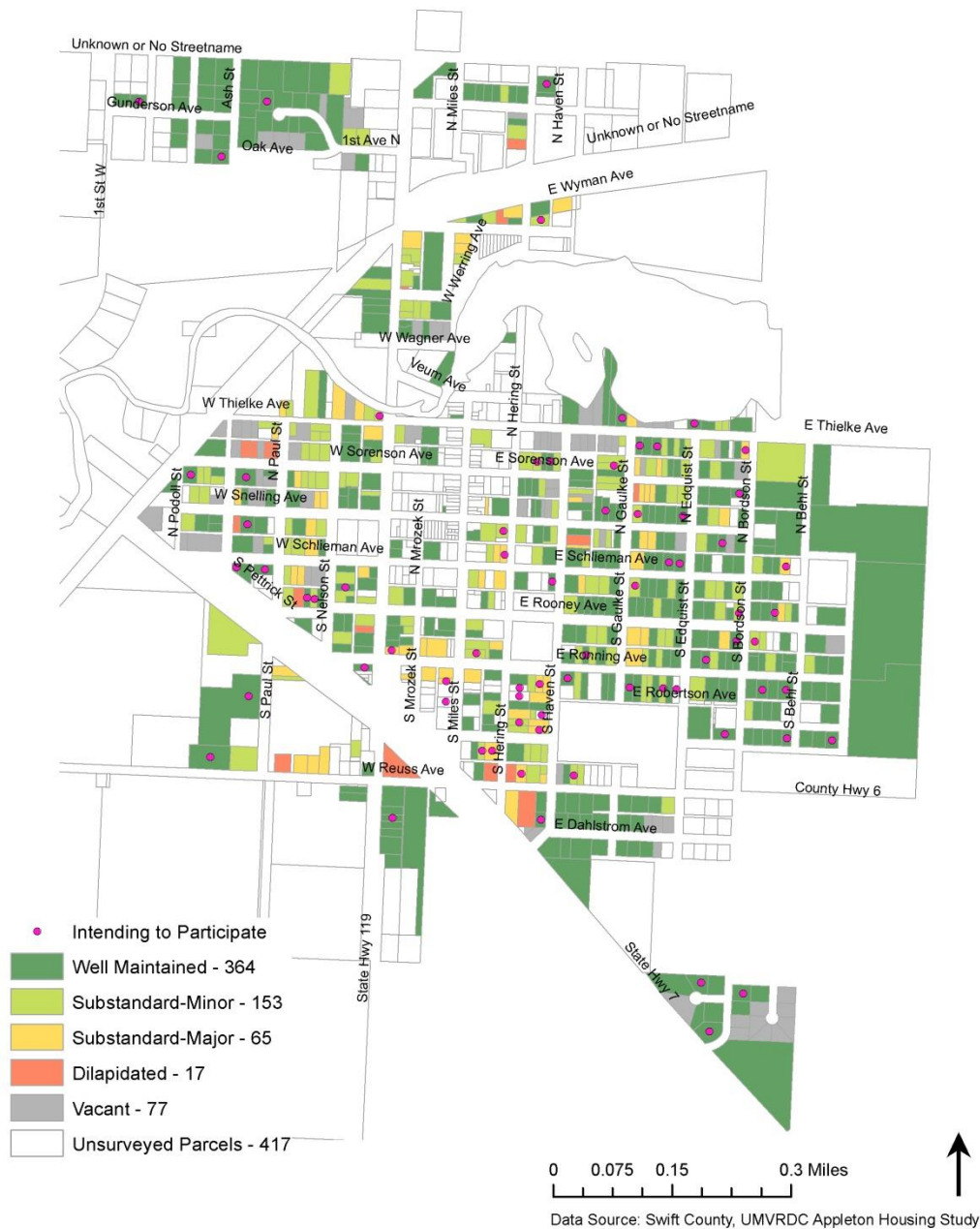
Occupied, Substandard-Major Homes in Appleton



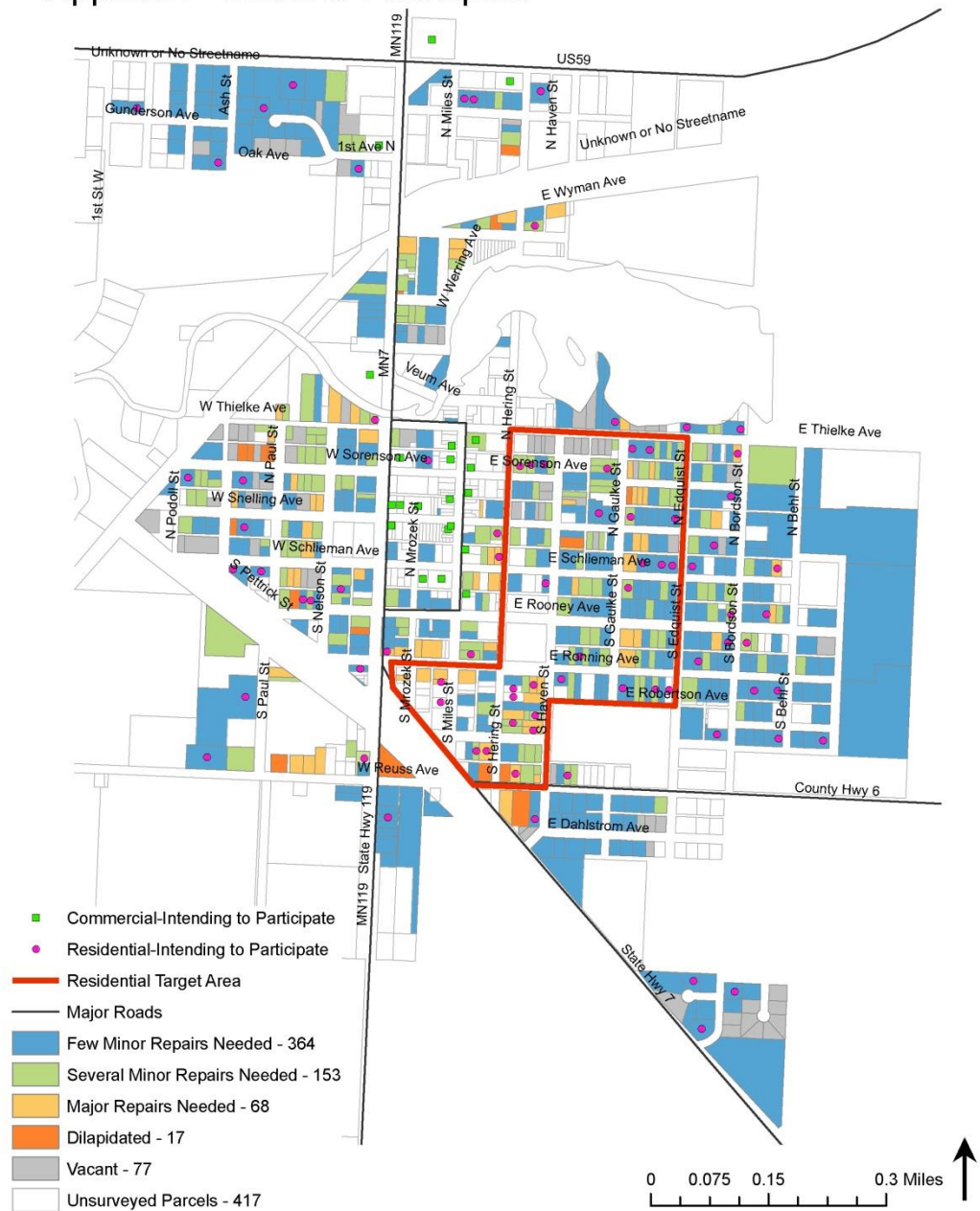
Appleton Housing by Status



Appleton Housing by Condition

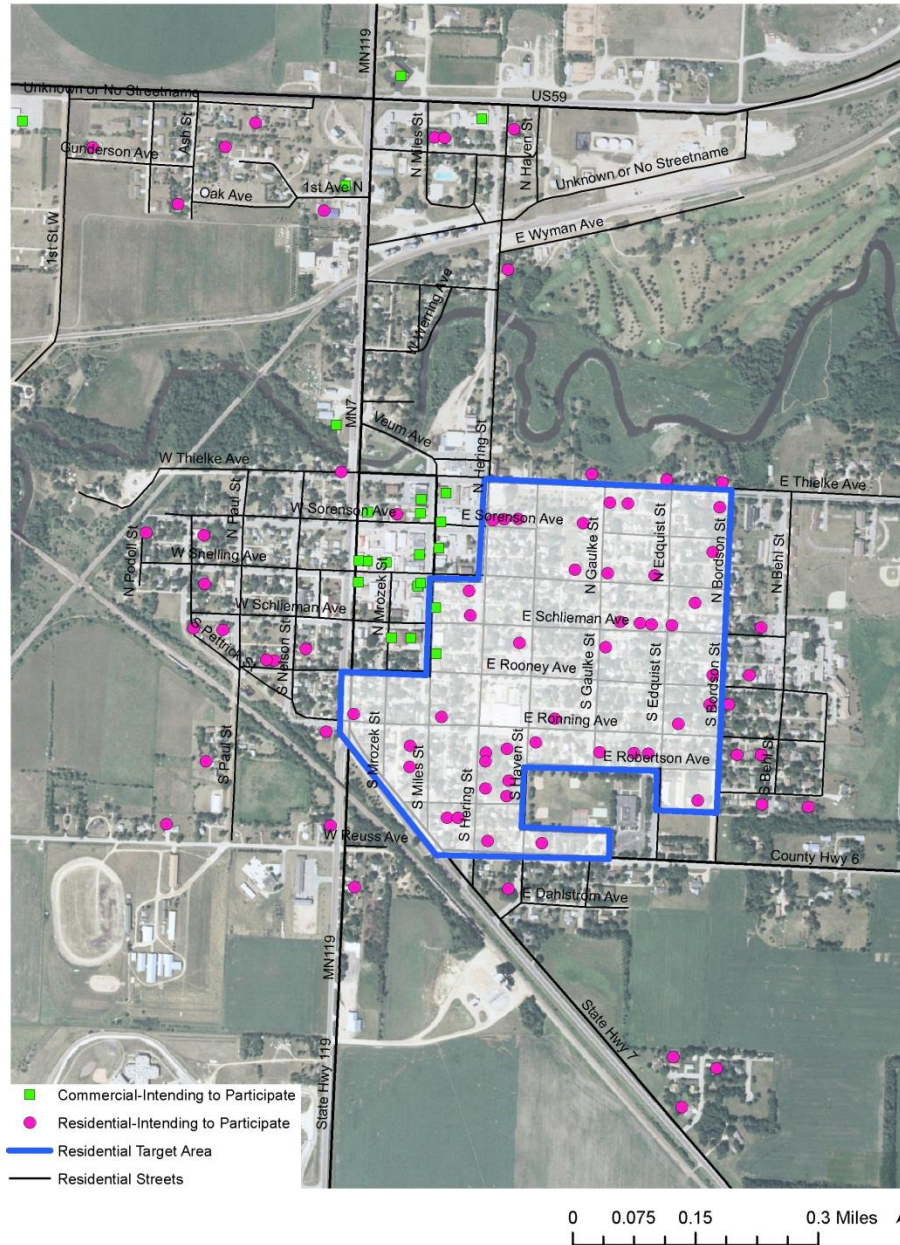


Appleton - Intent to Participate



Data Source: Swift County, Upper Minnesota Valley Regional Development Commission

Appleton - Residential Intent to Participate



What else can be done?

- Grant applications
- Plan for infill development
- Develop a countywide dilapidated structure demolition strategy

