

# A FEW ADU DESIGNS

a proposal for a new community of low-rise,  
high-density housing which fosters community  
through the sharing of communal facilities in  
Appleton, Minnesota

# INCREASING DENSITY

Housing has become increasingly multi-functional since the pandemic. How does the increasingly fluid boundary between living and working shape post-pandemic housing? Expectations are shifting and people are desiring change.

For many, the home is no longer only a space for domestic activities, but also for work, for socializing and recreation. What is a new model of living together? This project offers the opportunity to rethink the suburban residential infill typology.

The integration of diverse residents and housing types will offer new experiences, new opportunities for creating community, a place to dwell and connect, a place for experience and exchange.



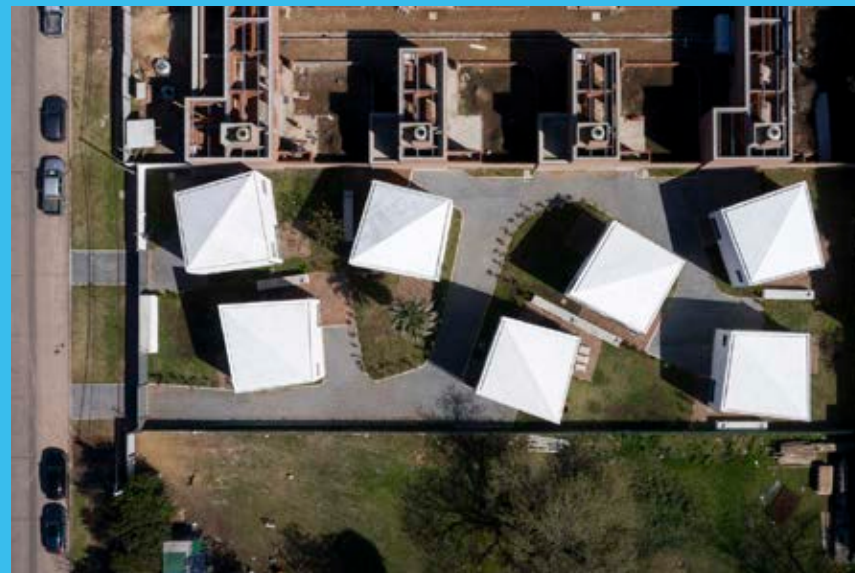
BRIGHT + GENEROUS SPACE

Alchemy Architects / LightHouse



PRAGMATIC + FLEXIBLE DESIGN

Productora / Denver



SCALE + PLAYFUL

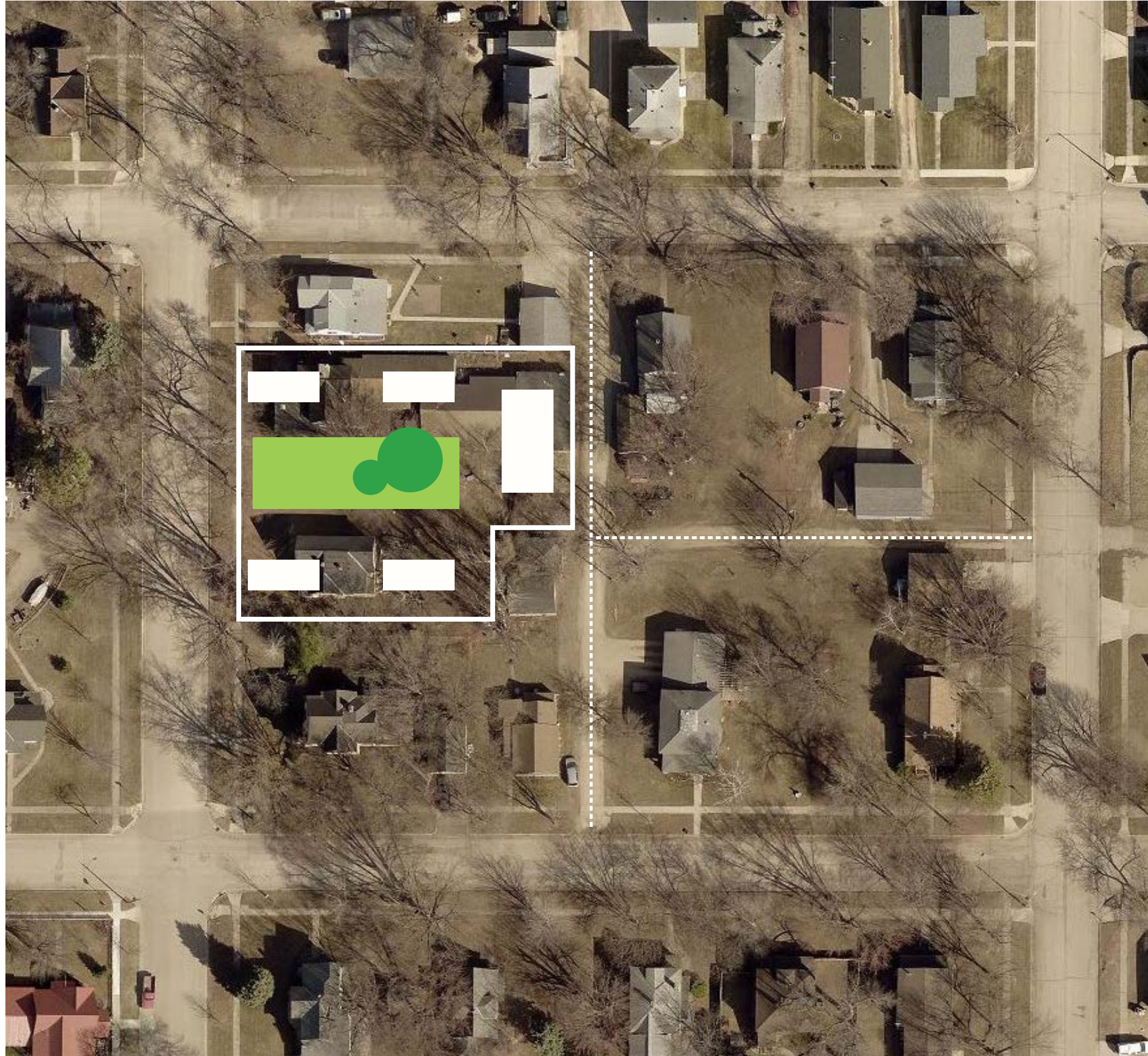
BBOA / Argentina



CHARACTER + COMMUNITY

Productora / Denver

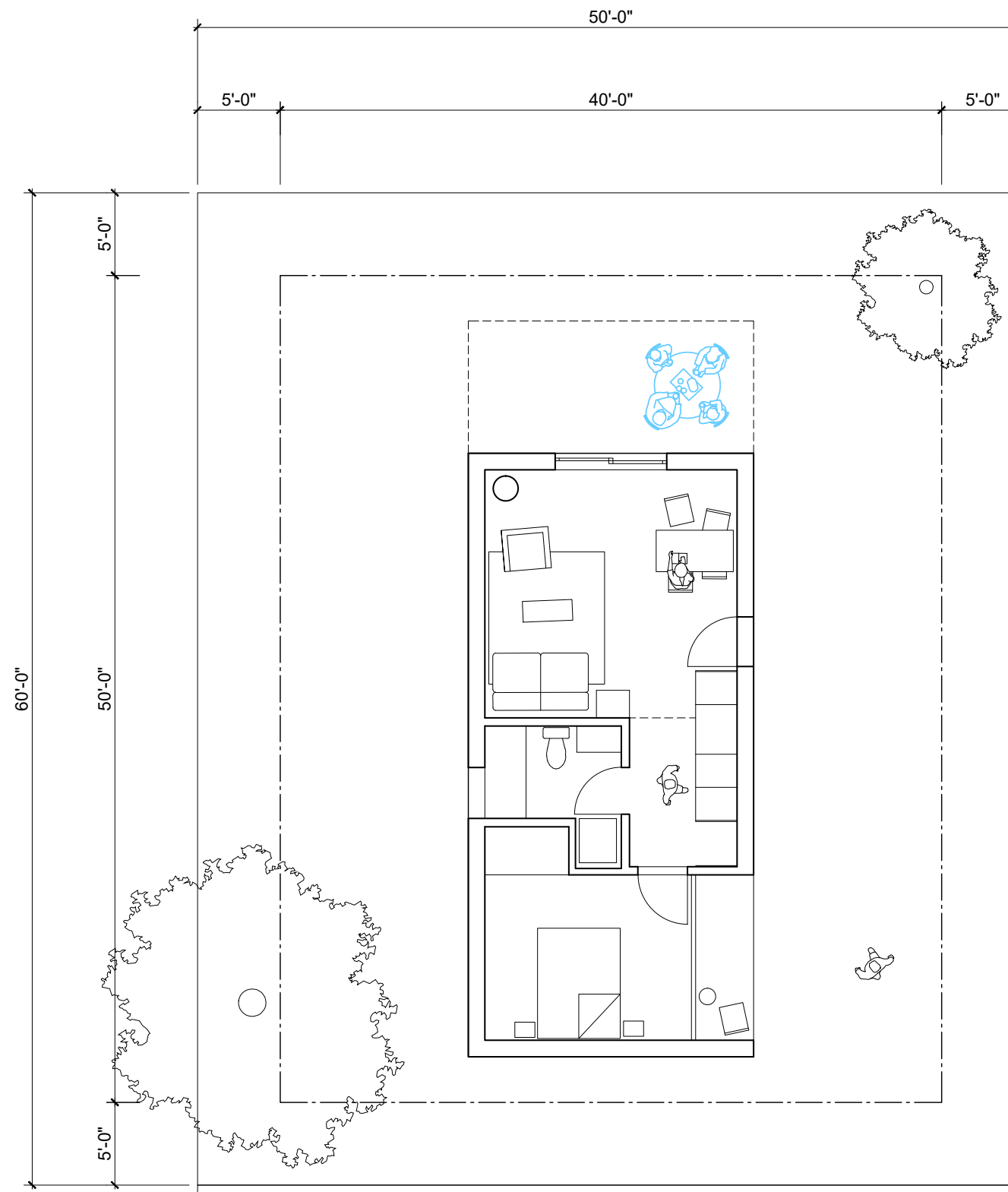
# SITE CONTEXT



View of current context

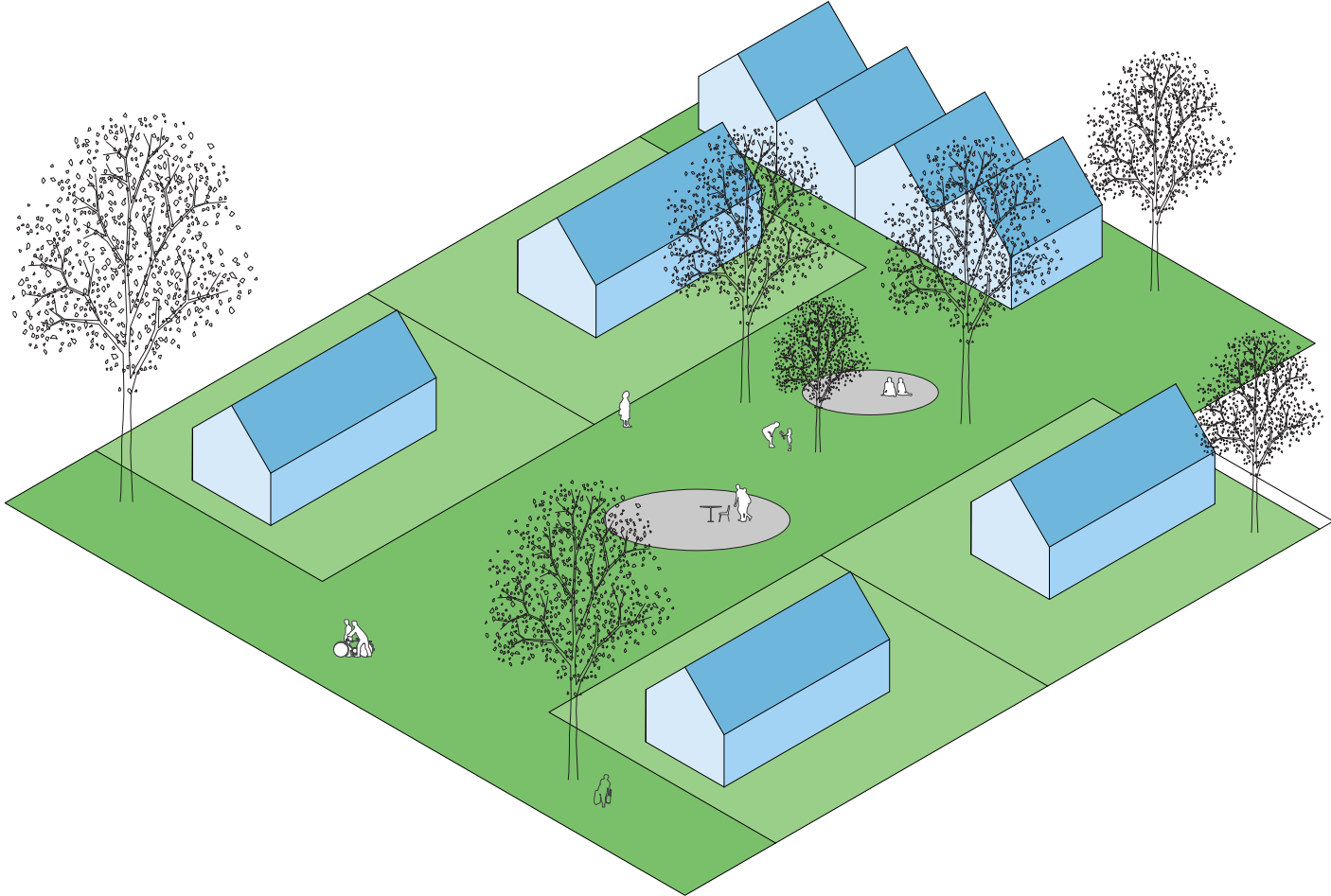
This project offers the opportunity to re-imagine the suburban residential infill typology. Through the integration of diverse housing types it is hoped this project will offer new experiences, new opportunities for creating community, a place to dwell and connect, a place for experience and exchange.

# SITE STUDY

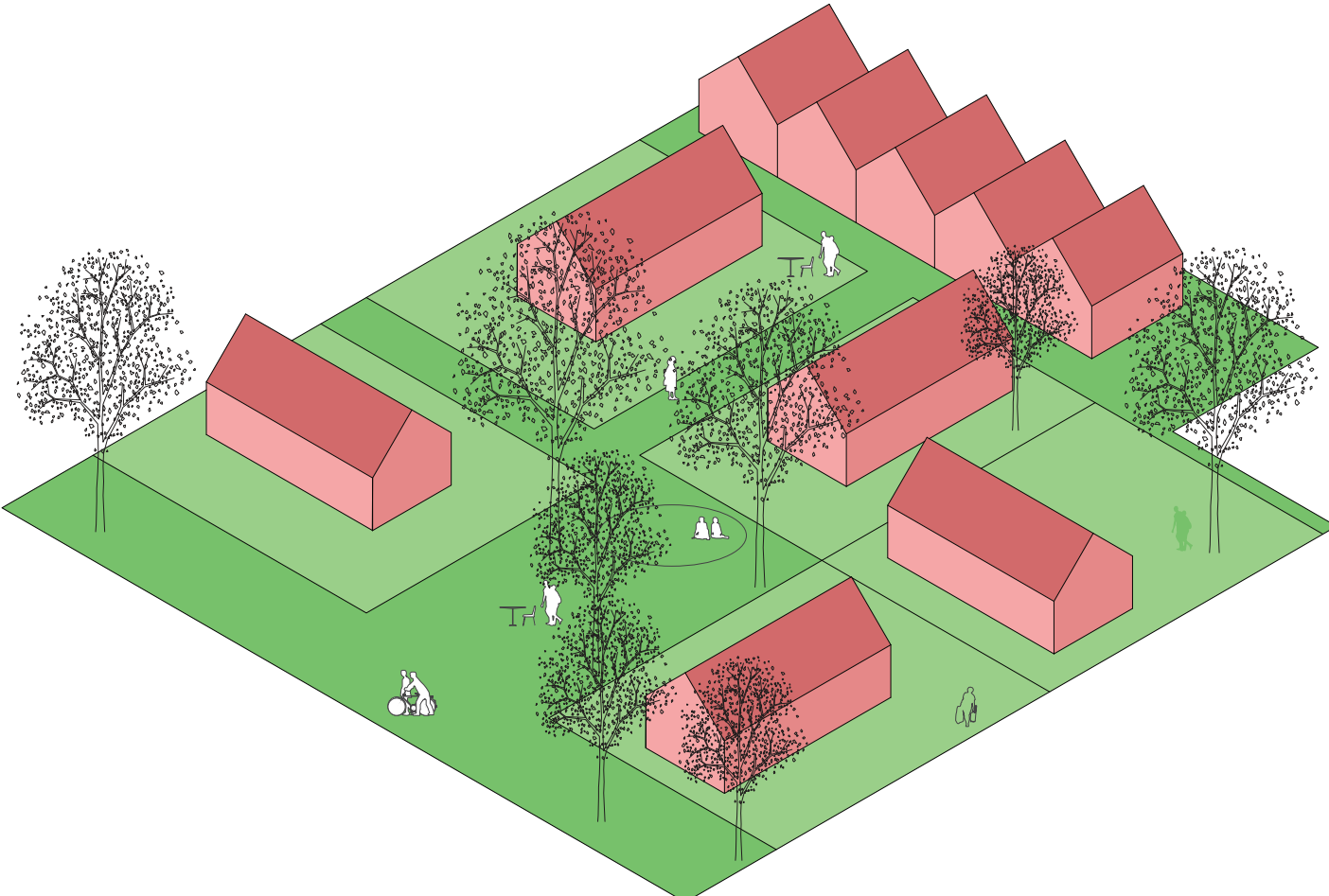


The plots are sized to allow any unit type to fit within the 5' setback

# LAYOUT SCENARIO

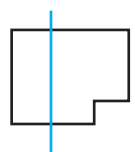
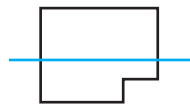


4 UNITS

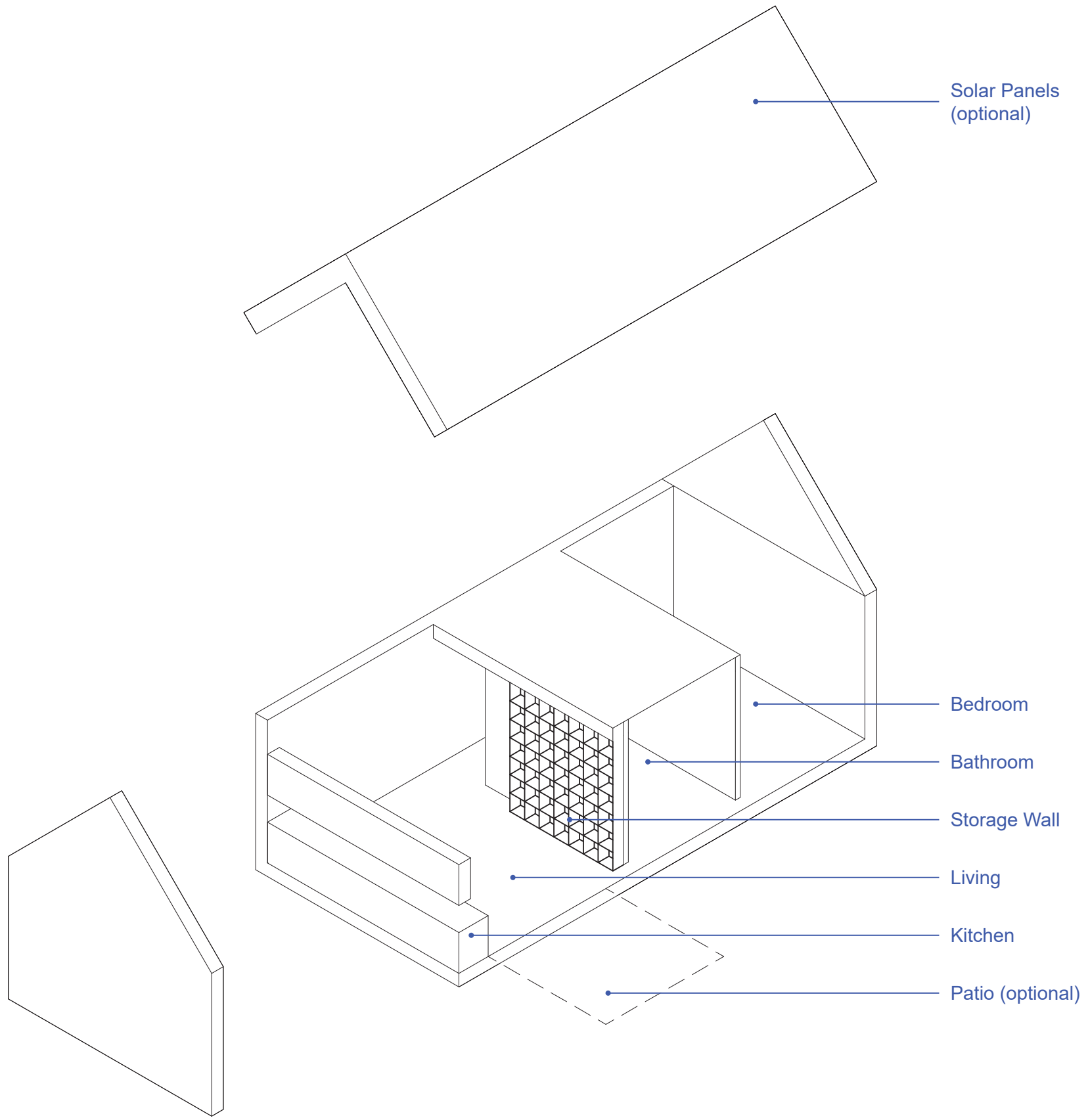


5 UNITS

# SITE SECTIONS



# ANATOMY OF A UNIT



Access to loft inspiration



Storage Wall inspiration



Kitchen Counter



Kitchen Cabinets



Bathroom Ceramic Tiles



Plywood Walls

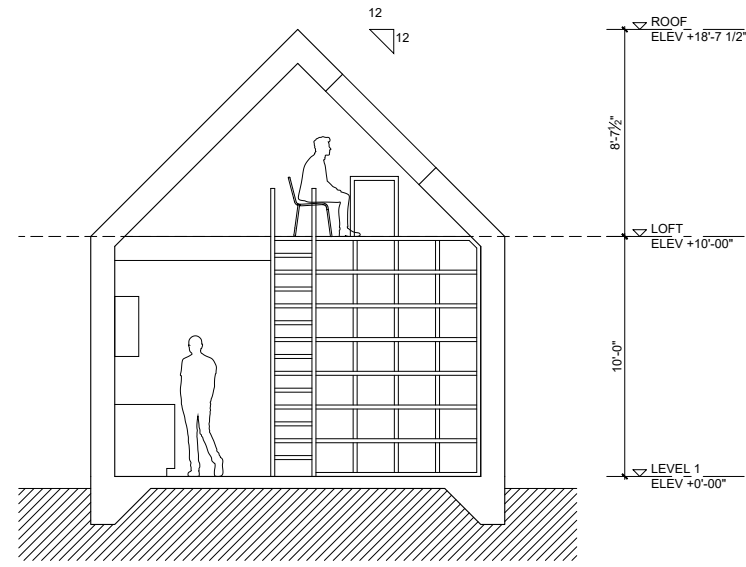


Concrete slab with radiant heating

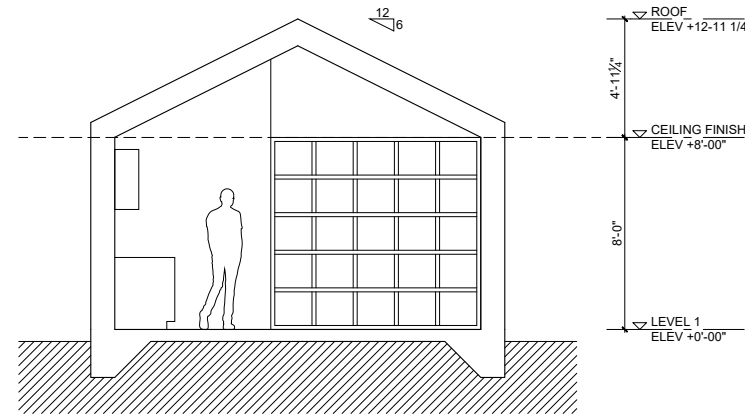


Oak Floor

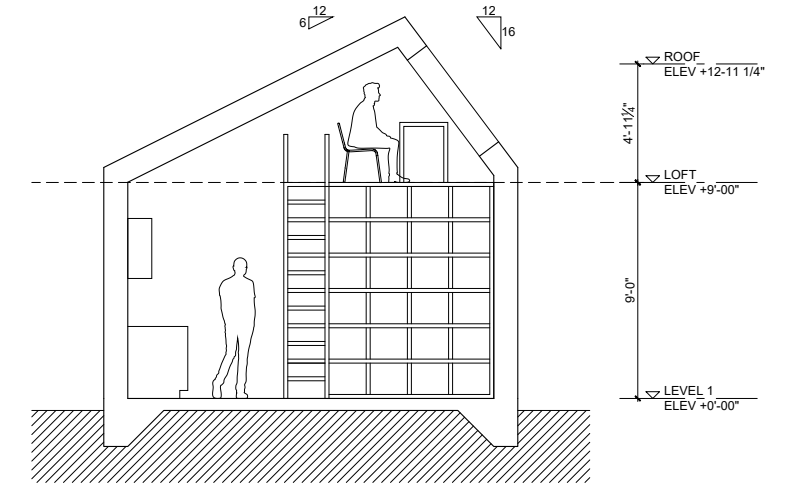
# ROOF FORM STUDY



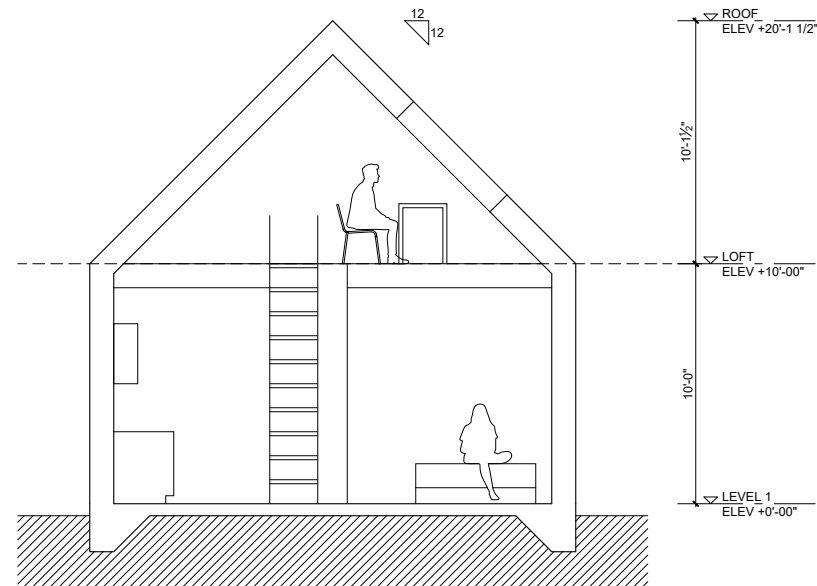
One - Two Bedroom  
High Gable  
-Opportunity for loft space, have to add skylight (egress), create more dynamic space



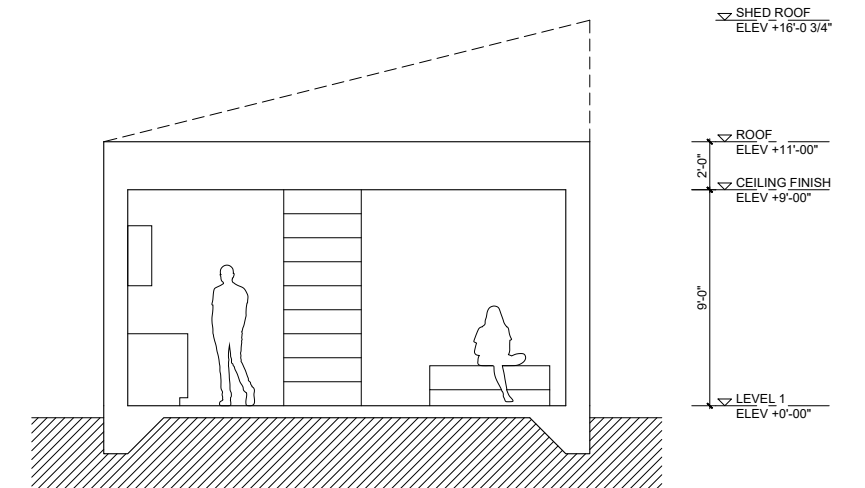
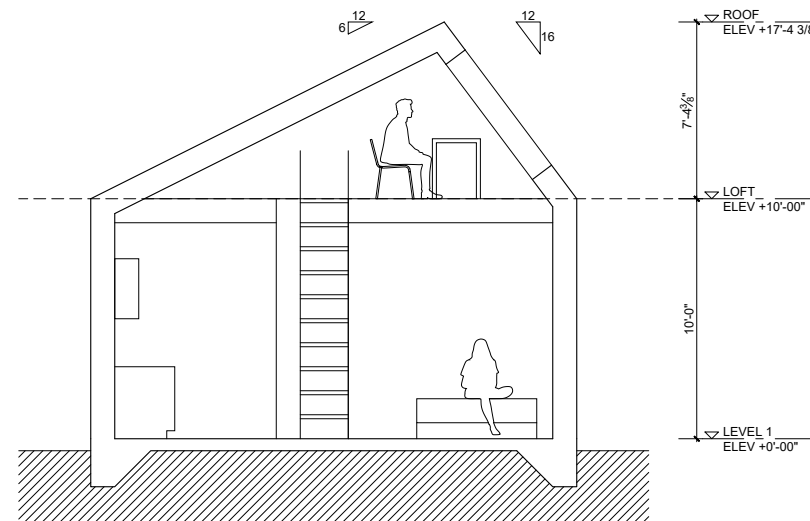
Low Gable  
-No loft



Asymmetrical Gable  
-Option for loft or storage, still low roof to put the extra headroom where you need it

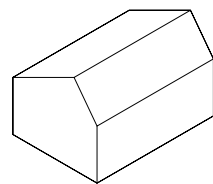
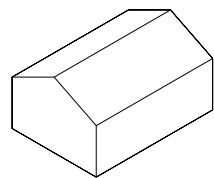
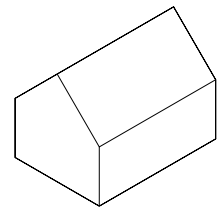


Studio  
High Gable  
-Opportunity for loft space, have to add skylight (egress), create more dynamic space



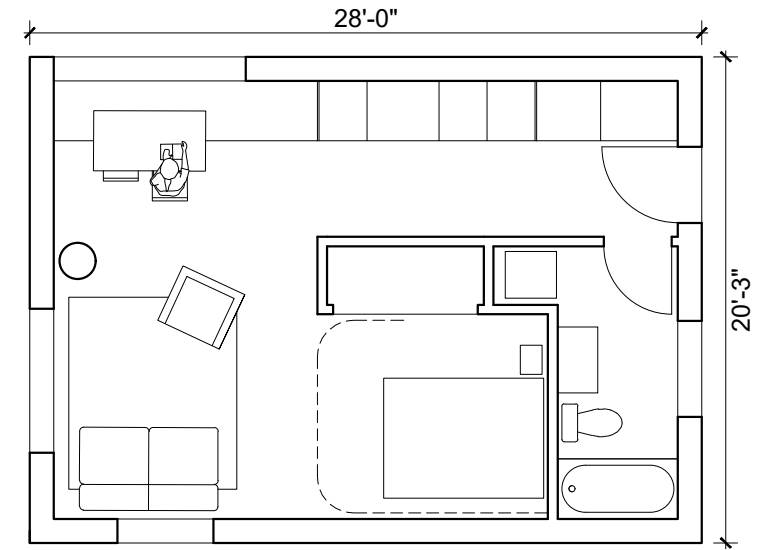


# STUDIO LAYOUT

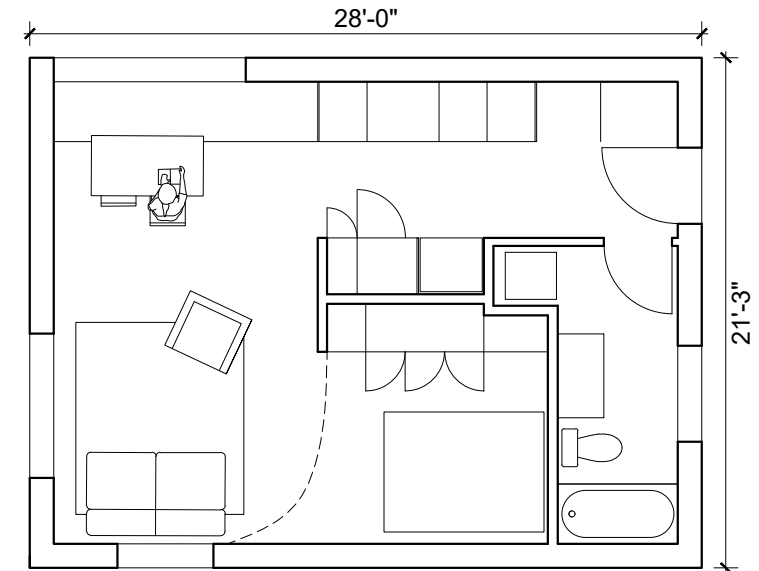


Roof Form Study

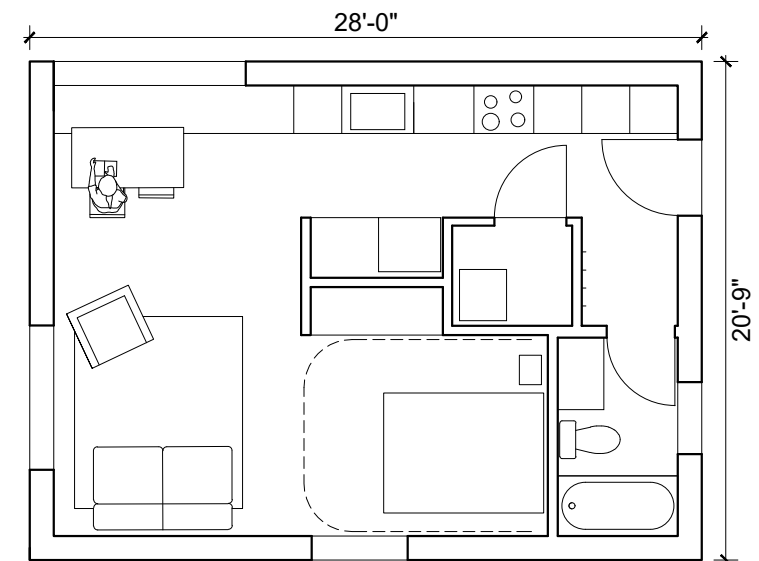
Option 1  
Area: 567



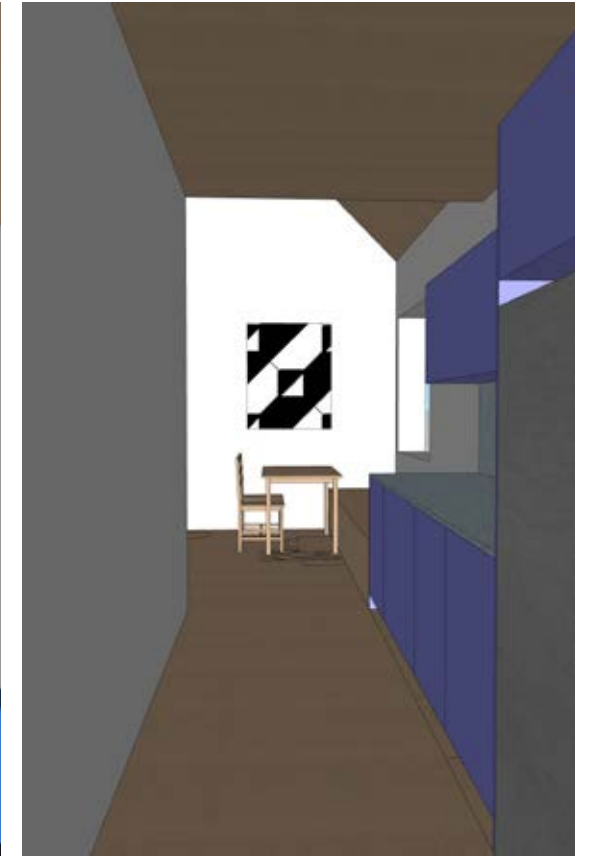
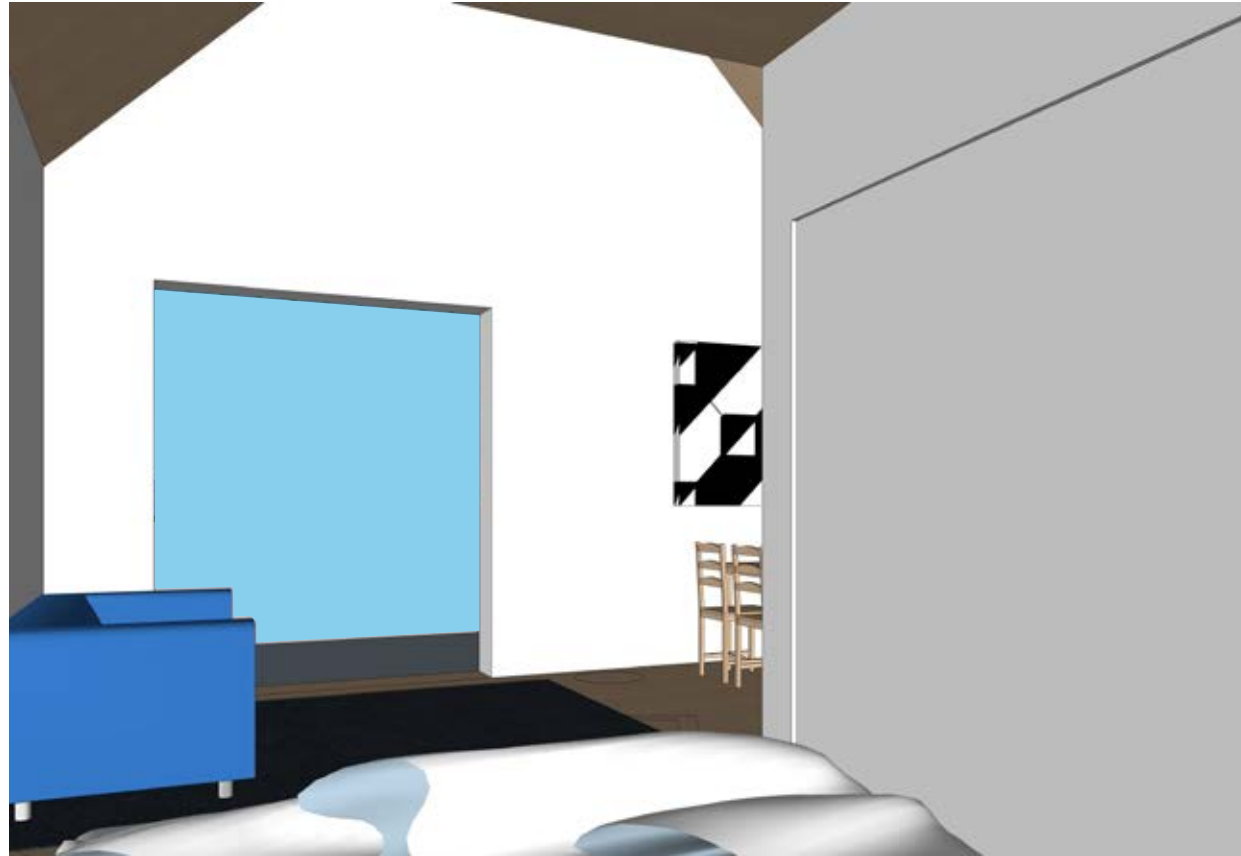
Option 2  
Area: 595



Option 3  
Area: 581

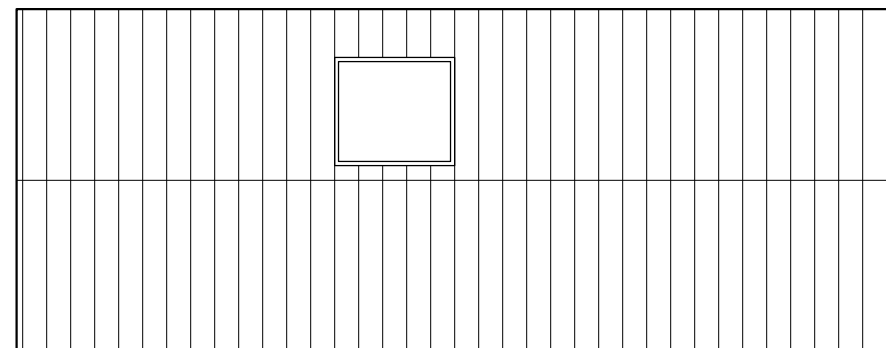
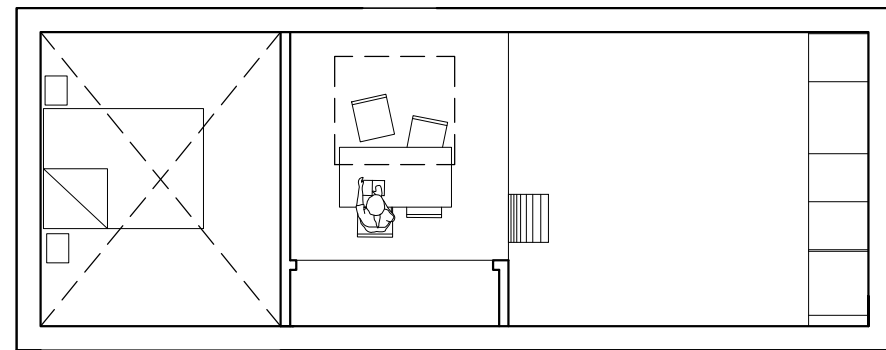
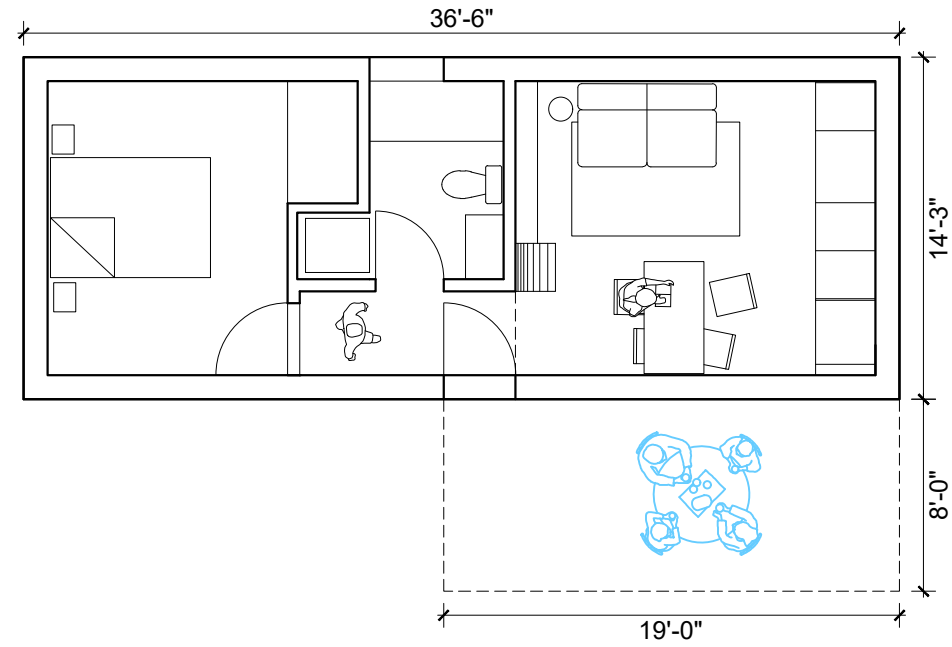


# STUDIO INTERIOR

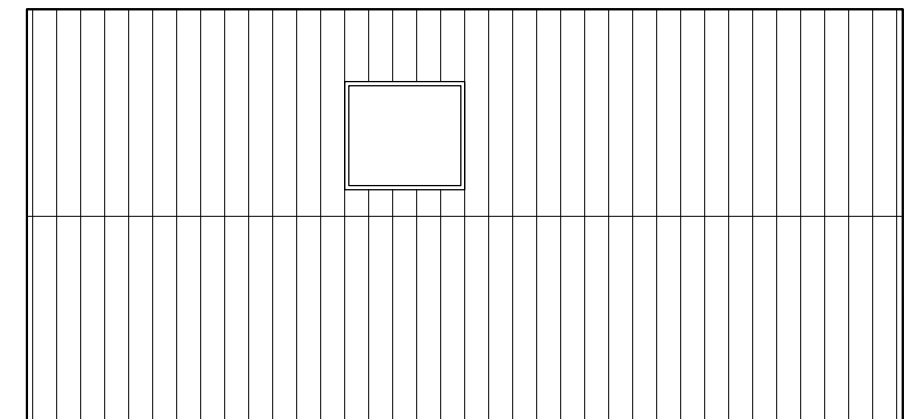
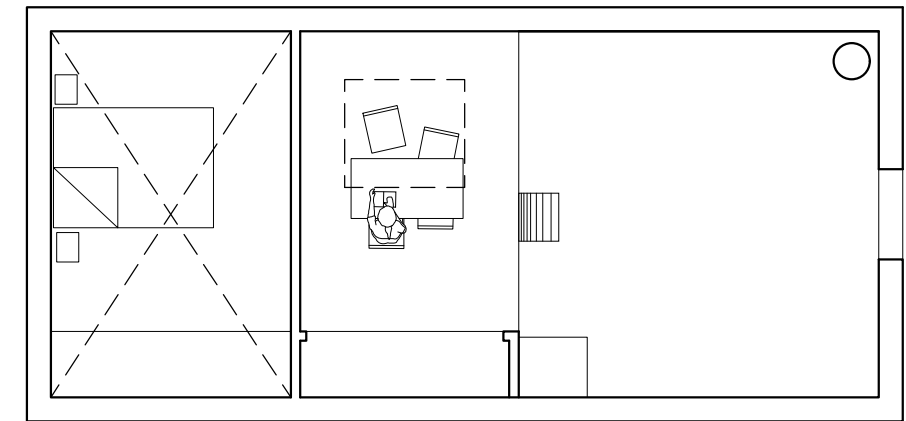
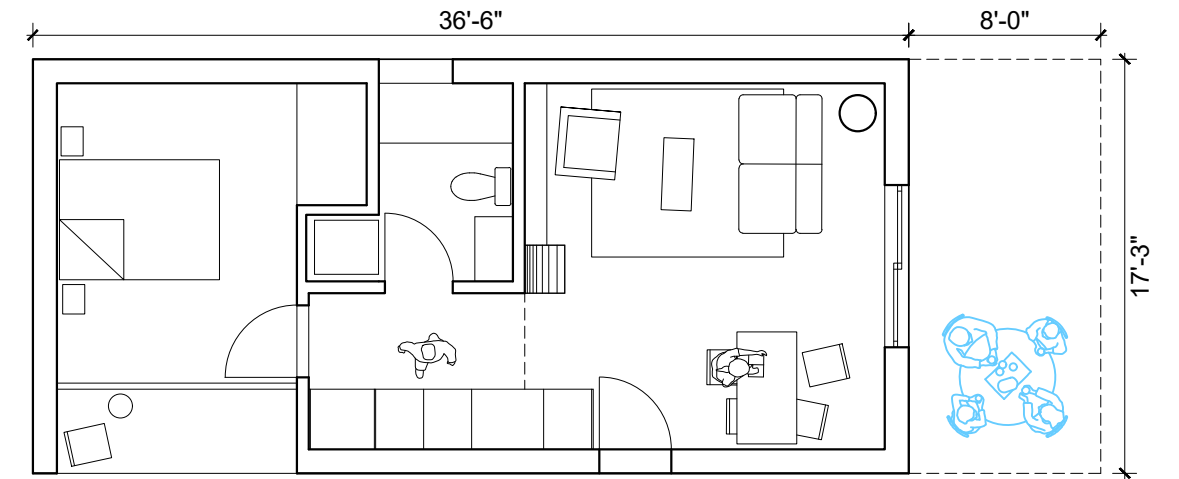


Storage Wall inspiration

# ONE BEDROOM LAYOUT

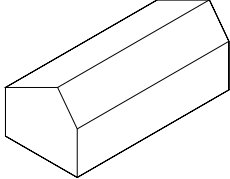
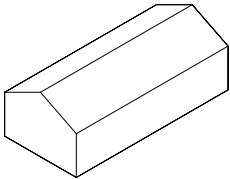
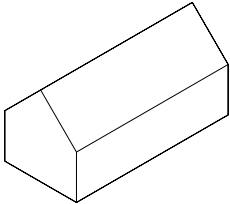
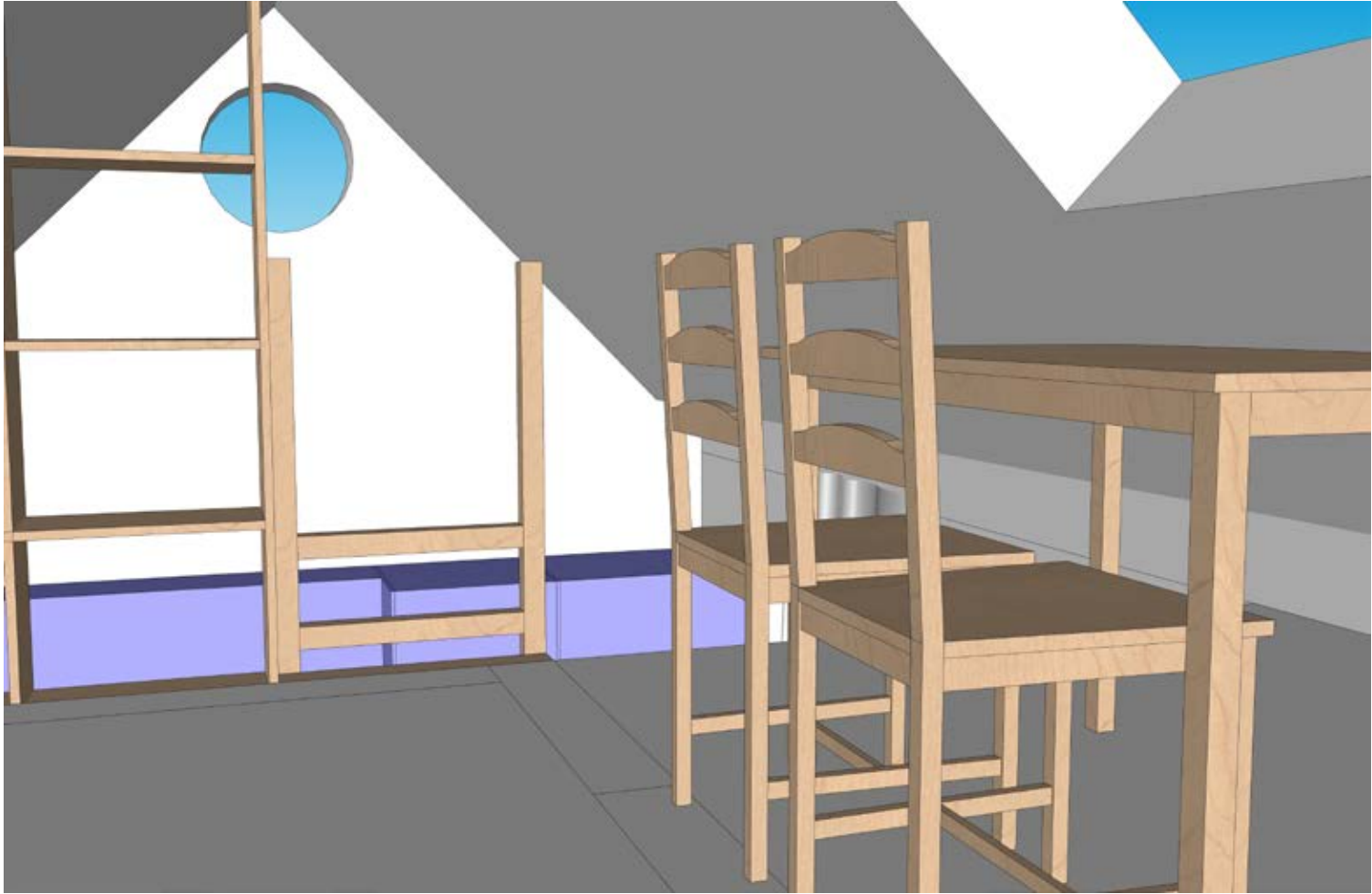
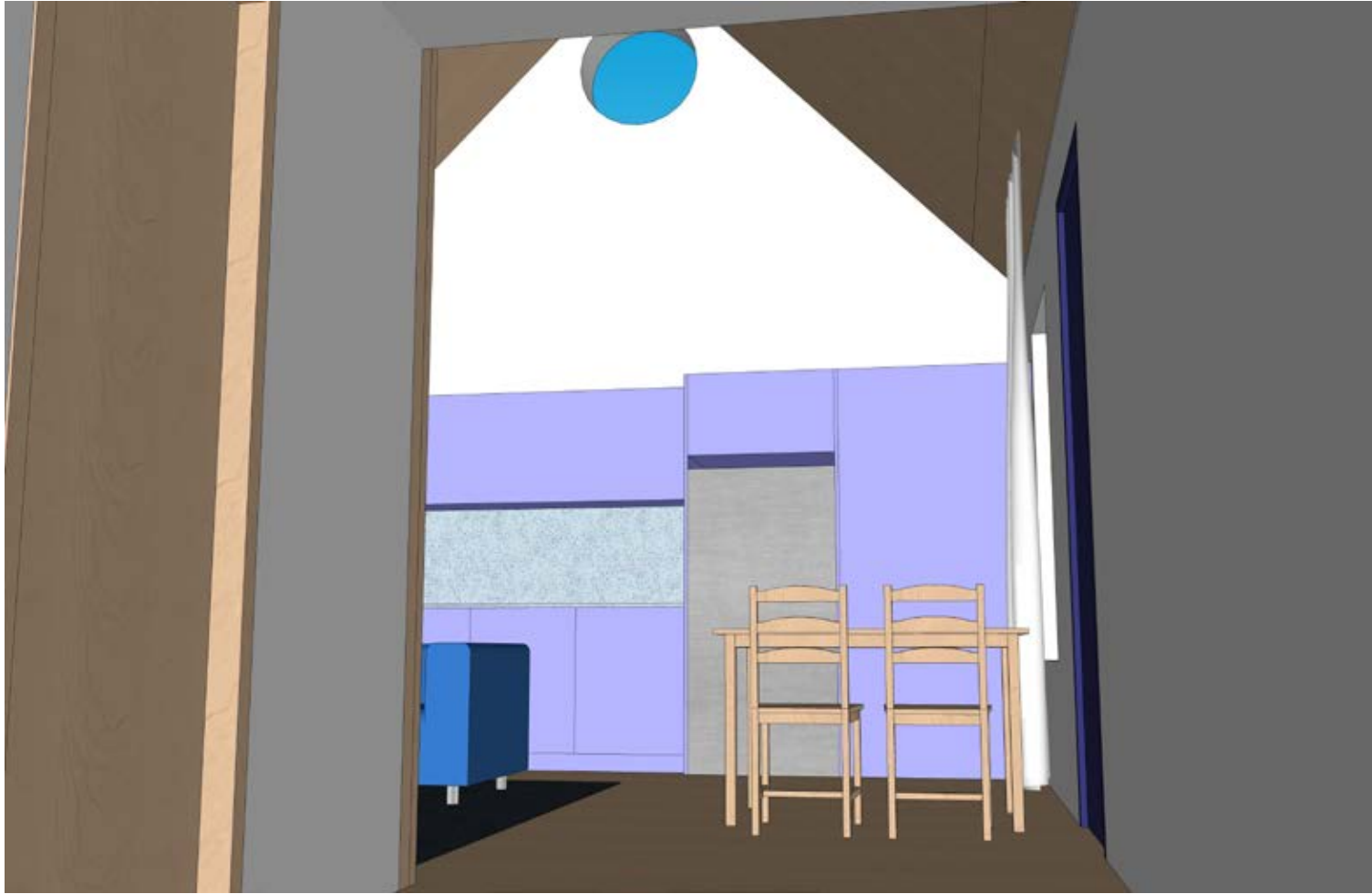


Option 1  
Area: 520



Option 2  
Area: 630

ONE / TWO BEDROOM INTERIOR

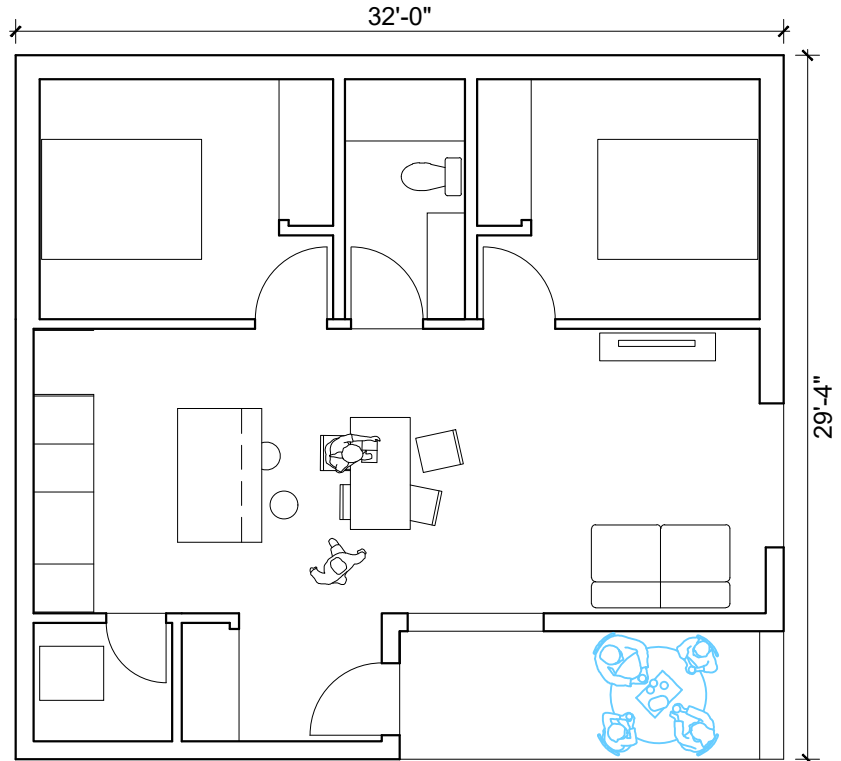


Roof Form Study

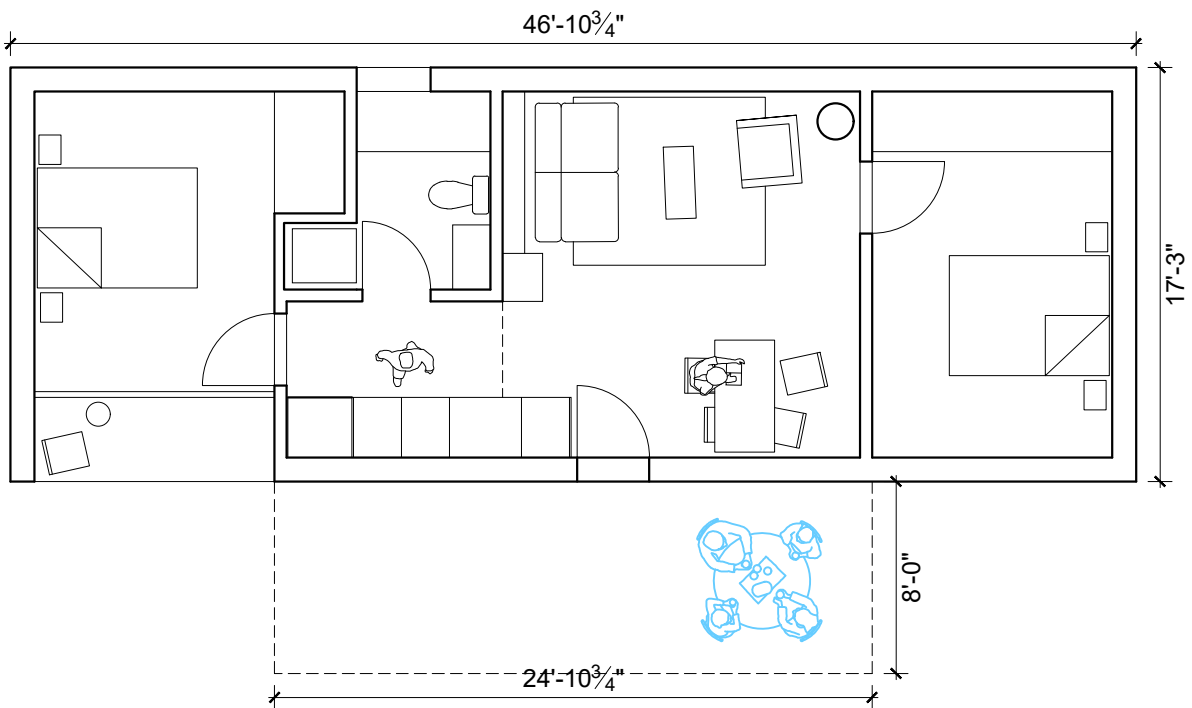
# ONE / TWO BEDROOM INTERIOR



# TWO BEDROOM LAYOUT

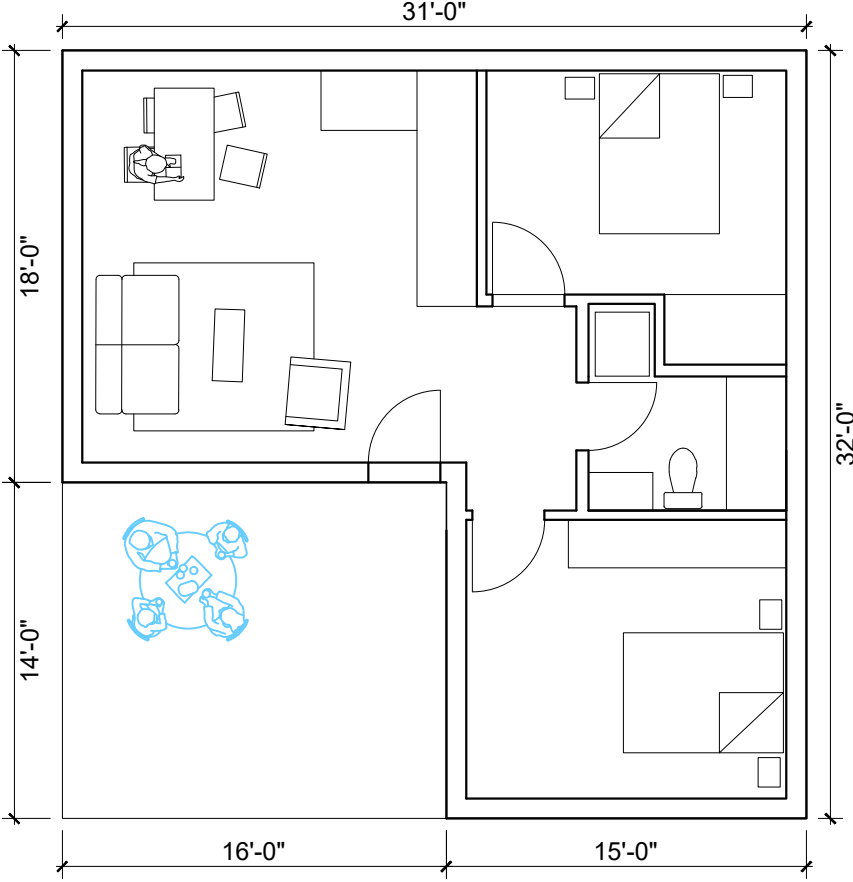


Option 1  
Area: 854



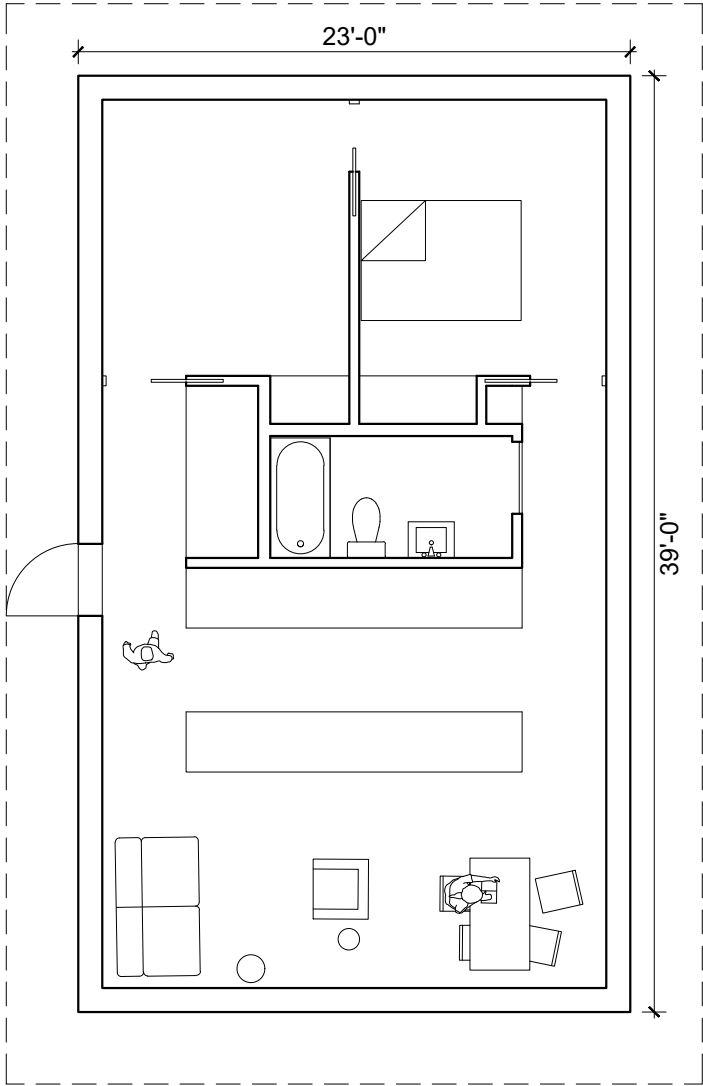
Option 2  
Area: 810

# TWO BEDROOM LAYOUT



Option 3  
Area: 768

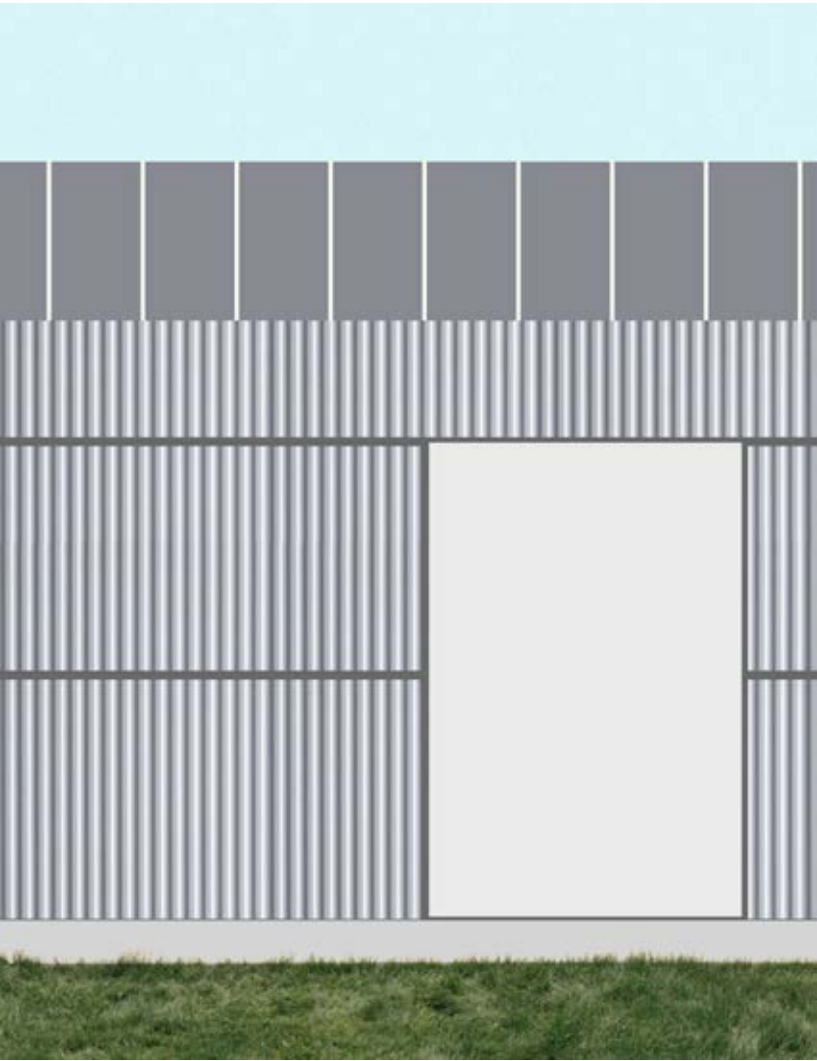
# TWO BEDROOM INTERIOR



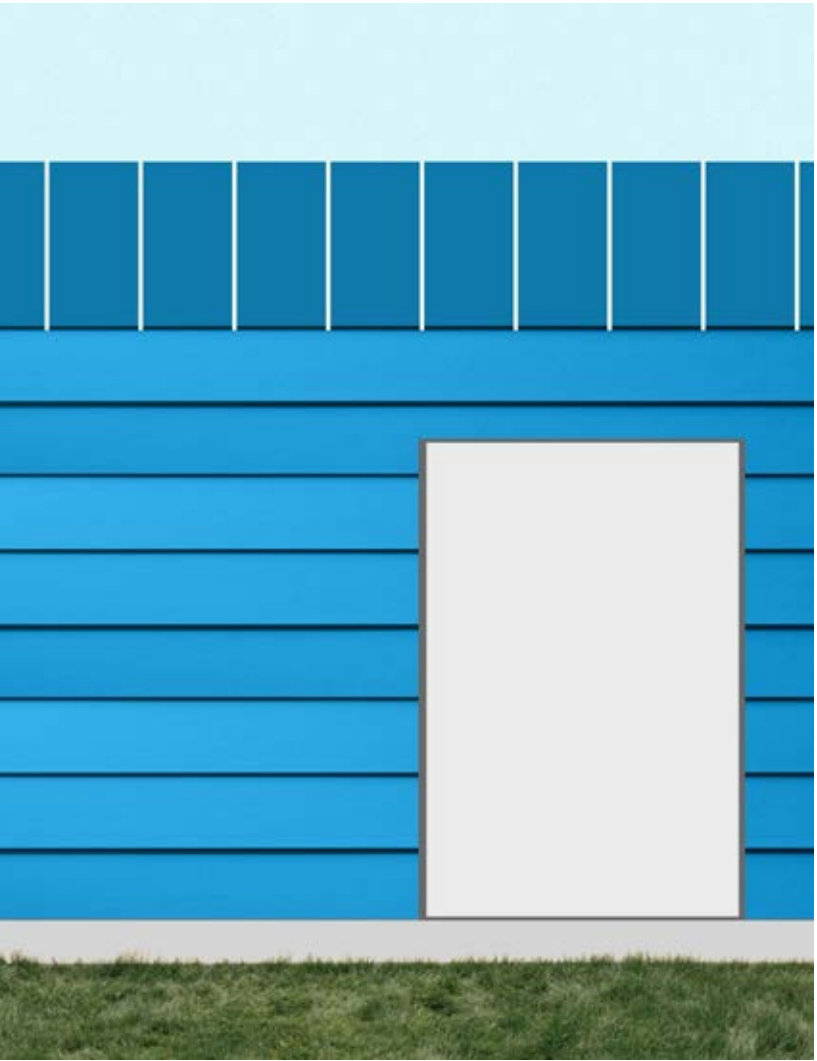
Option 4  
Area: 897



# CLADDING ELEVATION STUDY



Corrugated Cladding



Lap Siding  
(Hardie Panel)



Board and Batten  
(Wood or Hardie Panel)

## QUESTIONS

-Which unit types for final scheme? use a single type or a mix?

-Loft option?

-Cladding option?