

Housing & School Enrollment

The data presented below includes statistics related to school enrollment and housing in the Region, including median home values, median rent, median monthly housing costs and vacancy rates for communities in the UMRVDC Region and the State of Minnesota.

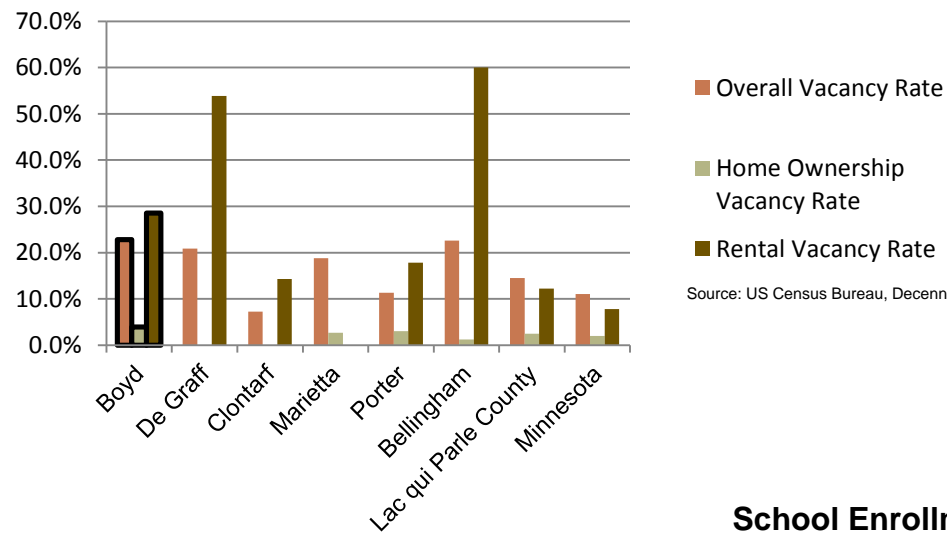
2010 Housing Statistics

City	Median Home Value	Median Rent	Median Monthly Housing Costs
Boyd	\$22,200	\$535	\$550
Bellingham	\$36,900	N/A	\$917
De Graff	\$38,400	N/A	\$600
Marietta	\$23,600	N/A	\$560
Porter	\$43,900	\$650	\$863
Watson	\$58,500	\$431	\$952
Lac qui Parle County	\$77,100	\$449	\$868
Minnesota	\$206,200	\$759	\$1,549

Source: US Census Bureau, ACS (2006-2010)

At \$22,200, the median home value in Boyd is below both Lac qui Parle County and the state of Minnesota, and it is the lowest compared to similar sized communities in the Region. Median monthly housing costs for homeowners are also the lowest among like-sized communities in the Region. The median rent in Boyd, on the other hand, falls in the middle compared to similar sized communities, for which data is available. However, the median rent in Boyd is higher than the median rent in Lac qui Parle County as a whole.

2010 Vacancy Rates



Source: US Census Bureau, Decennial

Home ownership vacancy rate and rental vacancy rate are the proportion of the homeowner or rental inventory that is vacant "for sale" or vacant "for rent." The overall vacancy rate includes other vacancies such as vacant "sold - not occupied," seasonal housing and vacant "rented - not occupied." In 2010, the city of Boyd had an overall vacancy rate comparable to other like-sized communities, while having a higher rental vacancy rate.

School Enrollment Since 1999

School District	1999-2000	2005-2006	2010-2011	% Change
Benson School District	1,216	1,050	970	-20.23%
Canby School District	766	581	522	-31.85%
Clinton-Graceville-Beardsley School District	565	434	377	-33.27%
Dawson-Boyd School District	681	544	517	-24.08%
Kerkhoven-Murdock-Sunburg School District	664	585	557	-16.11%
Lac qui Parle Valley School District	1,245	1,007	820	-34.14%
Lakeview School District	589	609	595	1.02%
M.A.C.C.R.A.Y. School District	986	790	674	-31.64%
Montevideo School District	1,599	1,459	1,342	-16.07%
Ortonville School District	717	530	527	-26.50%
Yellow Medicine East School District	1,299	1,081	862	-33.64%

Source: Minnesota Department of Education

Boyd is part of the Dawson-Boyd School District, which, like most school districts in the Region, has seen a steady decline in school enrollment over the last decade. The decline in school enrollment is consistent with the declining and aging population in the Region. Note that data was only available for public school districts.

UMVRDC staff developed the concept and design for the Community Profile Brochures and data was collected by students and staff from the Center for Small Towns at the University of Minnesota, Morris. All information was collected from trusted sources such as the U.S. Census Bureau, the American Community Survey, Minnesota Department of Employment & Economic Development (DEED), and the Minnesota Department of Education and is presumed to be accurate.



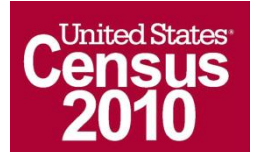
Helping Communities Prosper

2010 Census Data for Boyd, Minnesota



This Community Profile Brochure is comprised of statistical information from a variety of sources and will provide a snapshot of historical and current demographic, economic and social trends in the Upper Minnesota Valley Region. The purpose is to provide a concise summary of key community statistics to aid decision making about community and economic development.

This statistical and informational profile was compiled by the UMRVDC in collaboration with The Center for Small Towns at the University of Minnesota, Morris for all five counties (Big Stone, Chippewa, Lac qui Parle, Swift and Yellow Medicine) and 37 cities in the Upper Minnesota Valley Region.



Upper Minnesota Valley
REGIONAL DEVELOPMENT COMMISSION
Helping Communities Prosper

323 W. Schlieman Ave. Appleton, MN 56208 320.289.1981 www.umvrdc.org

For more information, or if you have questions, please visit our website: www.umvrdc.org.

Demographics

The demographic profile below provides a snapshot of Boyd and surrounding communities' historical, current and future population trends including population distribution and make up.

Comparison Historical Population from 1960 to 2010

City	1960	1970	1980	1990	2000	2010	% Change
Boyd	419	311	329	251	210	175	-58.23%
Households	158	125	NA	107	100	88	-44.30%
Average Household Size	2.65	2.49	NA	2.35	2.10	1.99	-25.01%
Bellingham	327	263	290	247	205	168	-48.62%
De Graff	196	195	179	149	133	115	-41.33%
Marietta	327	264	279	211	174	162	-50.46%
Porter	261	207	211	210	190	183	-29.89%
Watson	267	228	238	211	209	205	-23.22%
Lac qui Parle County	13,330	11,164	10,592	8,924	8,067	7,259	-45.54%

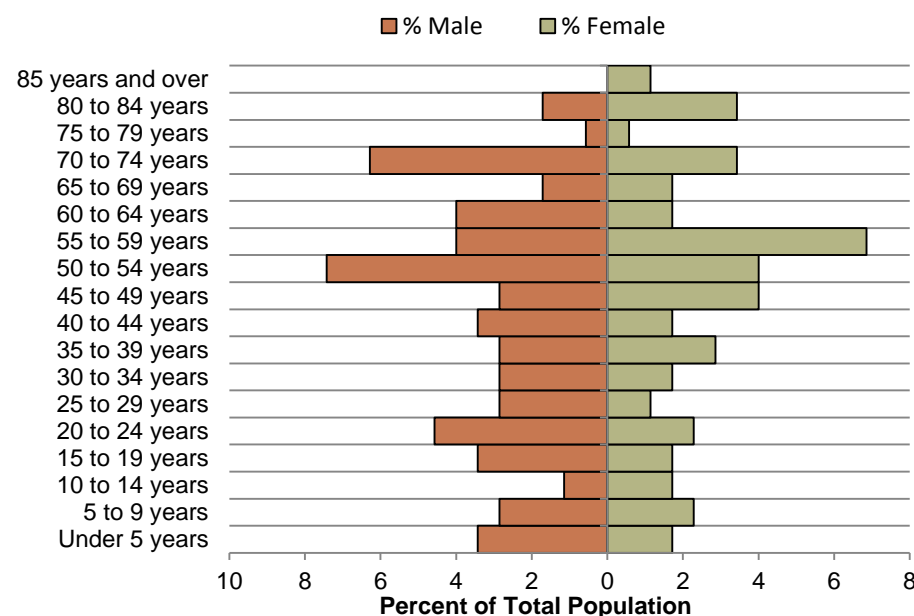
Source: US Census Bureau

Boyd Population Projections

	2015	2020	2025	2030	2035	% Change
Boyd	150	142	136	125	118	-21.33%
Lac qui Parle County	6,940	6,830	6,770	6,640	6,520	-6.05%
UMVRDC Region	45,510	45,300	45,000	44,500	44,110	-3.08%

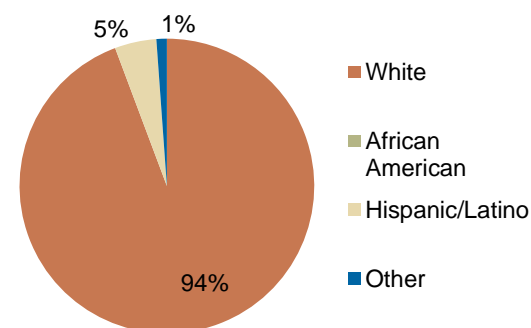
Source: US Census Bureau

Boyd Population Distribution, 2010



Boyd has seen an overall decrease in population from 1960-2010 of over half its 1960 population. Boyd had the highest percentage of population loss compared to like-sized communities in the Region. The population is projected to continue to decrease over the next few decades, although less dramatically than it has in the past.

Race, 2010



Source: US Census Bureau, Decennial Census

The population distribution above shows that there are spikes in the age cohorts around 50 to 60 year olds and males aged 70 to 74, but there is also a steady number of younger age cohorts. Boyd has a nearly all white population, which is typical for a community of this size.

Economic

The employment and industry data below represents a picture of the overall economic health of Boyd and Lac qui Parle County. This data shows the diversity of the Region's economy.

Annual Median Household Income:

- City of Boyd - \$33,438
- Big Stone - \$44,438
- Chippewa - \$44,712
- **Lac qui Parle - \$48,269**
- Swift - \$43,846
- Yellow Medicine - \$50,740
- UMRDC Region - \$46,401
- Minnesota - \$57,243

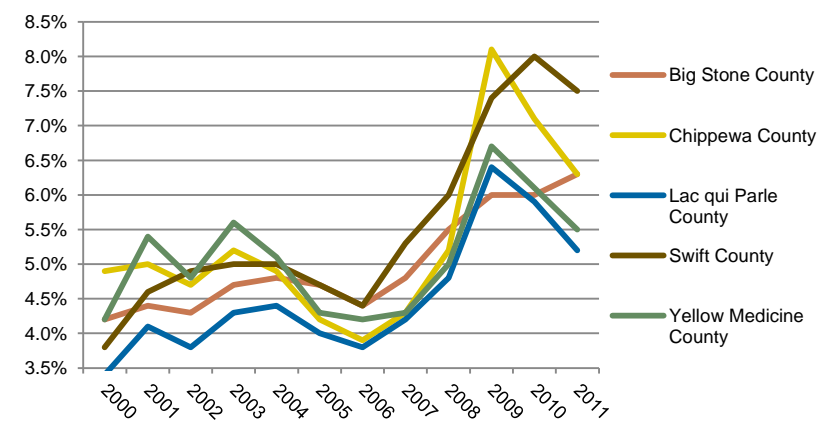
Source: 2007-2011 American Community Survey, U.S. Census Bureau

Types of Employment in Boyd, 2011

Types of Industry	Number of Employees	Number of Firms	Total Wages	Average Weekly Wage
Financial Activities	9	1	\$65,315	\$146
Public Administration	2	3	\$41,536	\$412
Total, All Industries	33	13	\$617,481	\$364

Source: Minnesota Department of Employment and Economic Development, QCEW

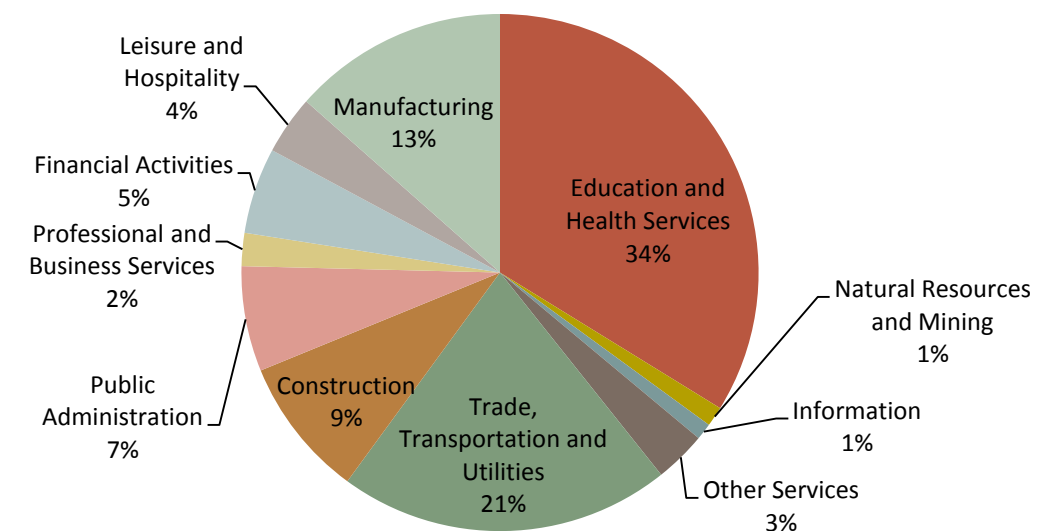
Unemployment Rates, 2000-2011



Source: Minnesota Department of Employment and Economic Development, LAUS

The employment categories shown in the table above and chart below show the 11 Super Sectors of Industry, which is the federal standard in data pertaining to business and industry. The table above shows that much of the employment and economic activity in Boyd is outside the 11 Super Sectors—only 11 of the 33 jobs and approximately one sixth of the city's economic activity. The pie chart below details that in Lac qui Parle County, just over one third of all employment comes from Education and Health Services. The Manufacturing and Trade, Transportation and Utilities sectors are also large employers in the county. Lac qui Parle County had a slight increase in unemployment during the Recession of 2007-2009, but in 2011 had an unemployment rate under 5.5%, the lowest of all counties in the Region.

Employment by Industry in Lac qui Parle County, 2011



Source: Minnesota Department of Employment and Economic Development, QCEW

