

Housing & School Enrollment

The data presented below includes statistics related to school enrollment and housing in the Region, including median home values, median rent, median monthly housing costs and vacancy rates for communities in the UMRVDC Region and the State of Minnesota.

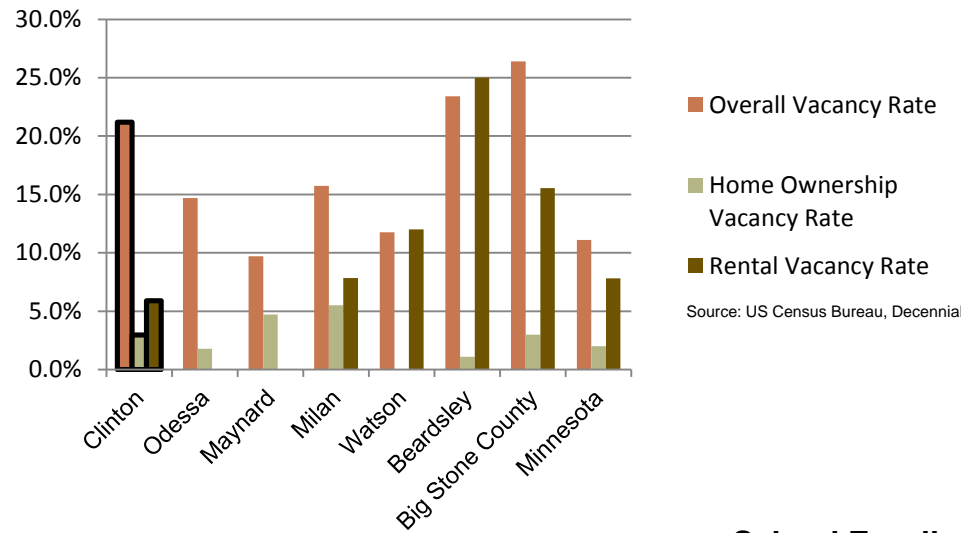
2010 Housing Statistics

City	Median Home Value	Median Rent	Median Monthly Housing Costs
Clinton	\$46,300	\$334	\$655
Odessa	\$42,500	N/A	\$633
Maynard	\$56,500	\$625	\$1,100
Milan	\$55,000	\$389	\$797
Watson	\$58,500	\$431	\$952
Beardsley	\$47,700	\$283	\$914
Big Stone County	\$81,900	\$447	\$924
Minnesota	\$206,200	\$759	\$1,549

Source: US Census Bureau, ACS (2006-2010)

The median home value in Clinton is well below the median home values for both Big Stone County and the state of Minnesota. Compared to surrounding communities in the Region, Clinton's home values are lower than most. This trend continues for Clinton's median monthly housing costs for homeowners, however the median monthly rent in Clinton falls in the middle compared to other similar communities in the Region.

2010 Vacancy Rates



Source: US Census Bureau, Decennial

Home ownership vacancy rate and rental vacancy rate are the proportion of the homeowner or rental inventory that is vacant "for sale" or vacant "for rent." The overall vacancy rate includes other vacancies such as vacant "sold - not occupied," seasonal housing and vacant "rented - not occupied." In 2010, the city of Clinton had a high overall vacancy rate but average to lower home ownership and rental vacancy rates.

School Enrollment Since 1999

School District	1999-2000	2005-2006	2010-2011	% Change
Benson School District	1,216	1,050	970	-20.23%
Canby School District	766	581	522	-31.85%
Clinton-Graceville-Beardsley School District	565	434	377	-33.27%
Dawson-Boyd School District	681	544	517	-24.08%
Kerkhoven-Murdock-Sunburg School District	664	585	557	-16.11%
Lac qui Parle Valley School District	1,245	1,007	820	-34.14%
Lakeview School District	589	609	595	1.02%
M.A.C.C.R.A.Y. School District	986	790	674	-31.64%
Montevideo School District	1,599	1,459	1,342	-16.07%
Ortonville School District	717	530	527	-26.50%
Yellow Medicine East School District	1,299	1,081	862	-33.64%

Source: Minnesota Department of Education

Clinton is part of the CGB School District, which, like many of the school districts in the Region, has seen a steady decline in school enrollment in recent years. The decline in enrollment, however is consistent with the declining and aging population in the Region. Note that data was only available for public school districts.

UMVRDC staff developed the concept and design for the Community Profile Brochures and data was collected by students and staff from the Center for Small Towns at the University of Minnesota, Morris. All information was collected from trusted sources such as the U.S. Census Bureau, the American Community Survey, Minnesota Department of Employment & Economic Development (DEED), and the Minnesota Department of Education and is presumed to be accurate.



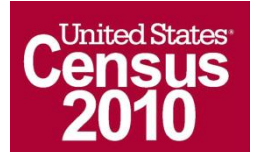
Helping Communities Prosper

2010 Census Data for Clinton, Minnesota



This Community Profile Brochure is comprised of statistical information from a variety of sources and will provide a snapshot of historical and current demographic, economic and social trends in the Upper Minnesota Valley Region. The purpose is to provide a concise summary of key community statistics to aid decision making about community and economic development.

This statistical and informational profile was compiled by the UMRVDC in collaboration with The Center for Small Towns at the University of Minnesota, Morris for all five counties (Big Stone, Chippewa, Lac qui Parle, Swift and Yellow Medicine) and 37 cities in the Upper Minnesota Valley Region.



Demographics

The demographic profile below provides a snapshot of Clinton and surrounding communities' historical, current and future population trends including population distribution and make up.

Comparison Historical Population from 1960 to 2010

City	1960	1970	1980	1990	2000	2010	% Change
Clinton	565	608	622	574	453	449	-20.53%
Households	211	218	NA	232	195	201	-4.74%
Average Household Size	2.68	2.79	NA	2.47	2.32	2.23	-16.58%
Beardsley	410	366	344	297	262	233	-43.17%
Odessa	234	194	177	155	113	135	-42.31%
Maynard	429	455	428	419	308	366	-14.69%
Milan	482	427	417	353	326	369	-23.44%
Watson	267	228	238	211	209	205	-23.22%
Big Stone County	8,954	7,941	7,716	6,285	5,820	5,269	-41.15%

Source: US Census Bureau

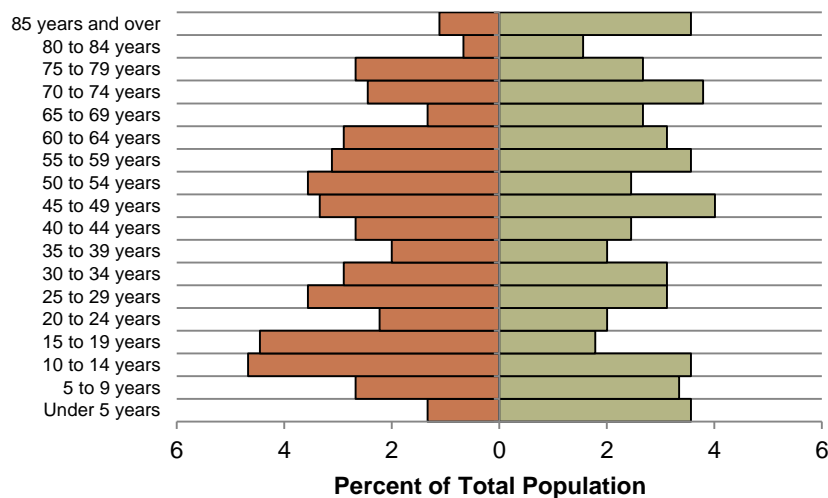
Clinton Population Projections

	2015	2020	2025	2030	2035	% Change
Clinton	369	355	345	324	309	-16.26%
Big Stone County	5,190	5,160	5,160	5,110	5,060	-2.50%
UMVRDC Region	45,510	45,300	45,000	44,500	44,110	-3.08%

Source: Minnesota Demographic Center

Clinton Population Distribution, 2010

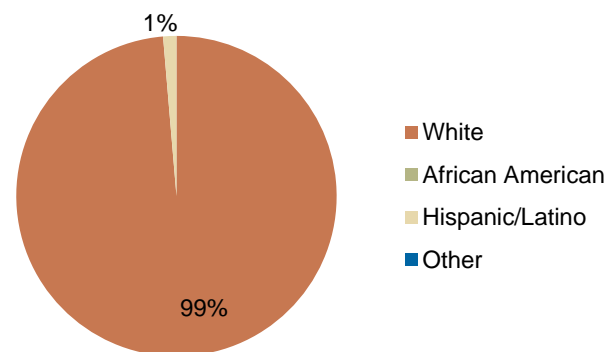
■ % Male ■ % Female



Source: U.S. Census Bureau, 2010

Although the population grew from 1960 to 1980, Clinton has seen an overall decrease in population from 1960 to 2010 of nearly 21 percent. The largest decreases happened between 1990 and 2000. The population is projected to continue to decrease over the next few decades. The population distribution shows a well distributed population with a significant percentage of population below the age of 19 years, which is unique among many of the small communities within the Region.

Race, 2010



Source: US Census Bureau, Decennial Census

Clinton has nearly an all white population, with only a small portion of the population identifying as Hispanic or Latino. This racial composition is typical for a community of this size.

Economic

The employment and industry data below represents a picture of the overall economic health of Clinton and Big Stone County. This data shows the diversity of the Region's economy.

Annual Median Household Income:

- City of Clinton - \$62,083
- Big Stone - \$44,438
- Chippewa - \$44,712
- Lac qui Parle - \$48,269
- Swift - \$43,846
- Yellow Medicine - \$50,740
- UMRDC Region - \$46,401
- Minnesota - \$57,243

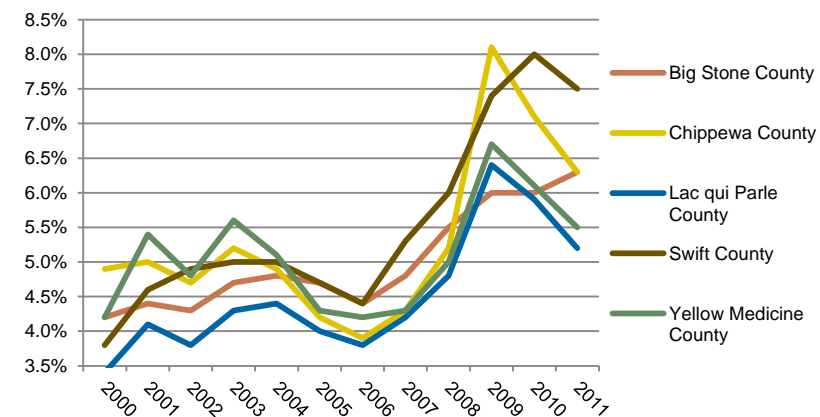
Source: 2007-2011 American Community Survey, U.S. Census Bureau

Types of Employment in Clinton, 2011

Types of Industry	Number of Employees	Number of Firms	Total Wages	Average Weekly Wage
Trade, Transportation and Utilities	28	7	\$1,545,196	\$1,072
Financial Activities	14	4	\$769,462	\$1,056
Public Administration	6	1	\$59,381	\$182
Total, All Industries	74	20	\$2,799,276	\$723

Source: Minnesota Department of Employment and Economic Development, QCEW

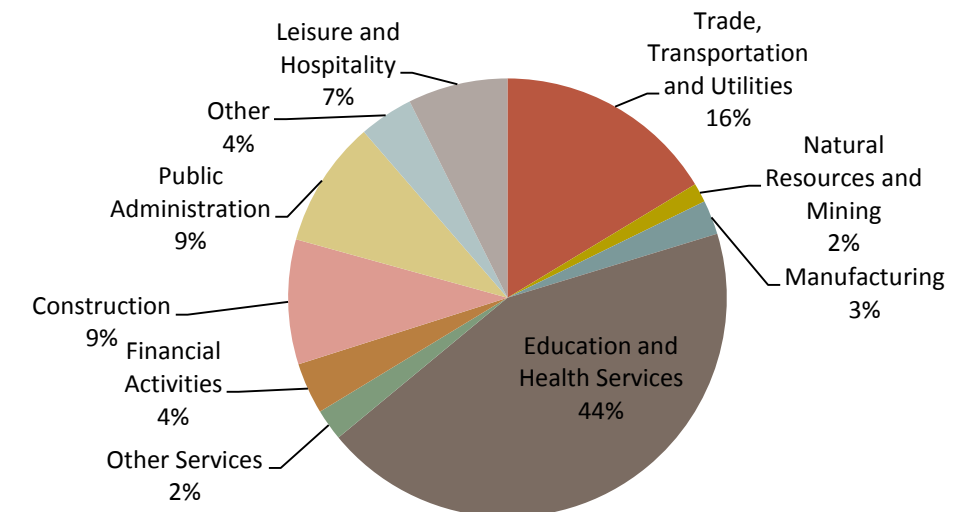
Unemployment Rates, 2000-2011



Source: Minnesota Department of Employment and Economic Development, LAUS

The employment categories shown in the table above and chart below show the 11 Super Sectors of Industry, which is the federal standard in data pertaining to business and industry. Much of the economic activity in Clinton is in the Trade, Transportation and Utilities sector. The pie chart below details that in Big Stone County, nearly half of all employment comes from Education and Health Services. Big Stone County had a slight increase in unemployment during the Recession of 2007-2009, but in 2011 maintained an unemployment rate under 6.5%.

Employment by Industry in Big Stone County, 2011



Source: Minnesota Department of Employment and Economic Development QCEW

